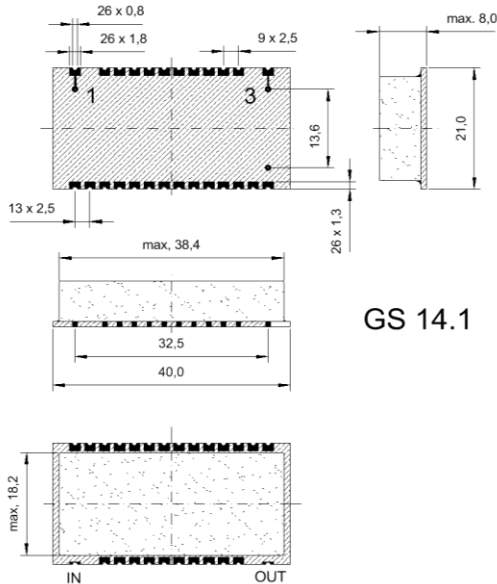


Specification for monolithic crystal filter:

**MQF 35.25-2600/06V1**

**1. General**

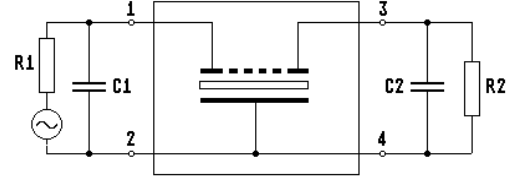
**1.1. Package:**



GS 14.1

**Please note:**

- package is not suitable for reflow soldering
- filters are 2002 / 95 / EC RoHS compliant

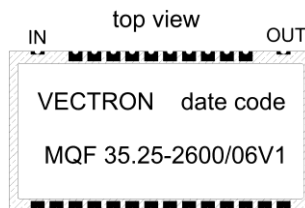


- |                                   |                     |
|-----------------------------------|---------------------|
| 1.2. Type name:                   | MQF 35.25-2600/06V1 |
| 1.3. Number of poles:             | 10                  |
| 1.4. Operating temperature range: | -20°C to +70°C      |
| 1.5. Storage temperature range:   | -45°C to +85°C      |

**2. Electric values**

- |   |                          |
|---|--------------------------|
| 2.1. Nominal centre frequency fo:                 | 35.25 MHz                |
| <b>2.2. Pass band</b>                             |                          |
| 2.2.1. Centre frequency fc:                       | 35.25 MHz ± 1.5 kHz      |
| 2.2.2. Bandwidth between 6 dB - frequencies:      | ≥ fc ± 13 kHz            |
| 2.2.3. Ripple:                                    | ≤ 1.0 dB at fc ± 8.0 kHz |
| 2.2.4. Insertion loss:                            | ≤ 5.0 dB                 |
| ( measured on smallest attenuation in pass band ) |                          |
| <b>2.3. Stop band</b>                             |                          |
| 2.3.1. fc ± 25 kHz.....± 5 MHz                    | ≥ 80 dB                  |
| 2.3.2. Alternate attenuation:                     | ≥ 80 dB                  |
| 2.4. Terminating impedance ( input and output ):  | 50 Ω // 0 pF             |

**3. Marking:**



- |                            |   |
|----------------------------|---|
| 4. Environment conditions: | Corresponding to Vectron standard CF001 |
|----------------------------|---|

Edited by: \_\_\_\_\_ date: \_\_\_\_\_ name: \_\_\_\_\_