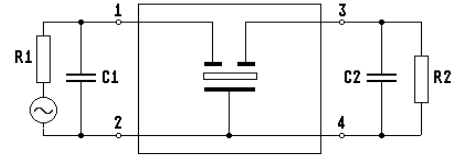
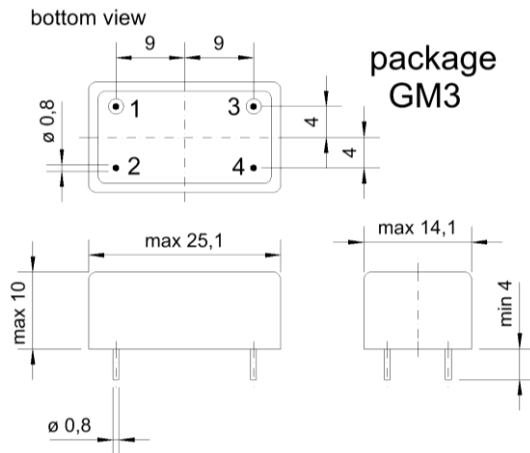


Specification for monolithic crystal filter: **MQF 44.85 - 1300/06**

## 1. General

### 1.1. Package:



- |                                   |                   |
|-----------------------------------|-------------------|
| 1.2. Type name:                   | MQF 44.85-1300/06 |
| 1.3. Number of poles:             | 4                 |
| 1.4. Operating temperature range: | -20°C to +70°C    |
| 1.5. Storage temperature range:   | -35°C to +80°C    |

## 2. Electric values

- |   |  |
|---|--|
| 2.1. Nominal centre frequency $f_0$ :                 | 44.85 MHz                                    |
| <b>2.2. Pass band</b>                                 |  |
| 2.2.1. Bandwidth between 3 dB - frequencies:          | $\geq f_0 \pm 6.5$ kHz                       |
| 2.2.2. Ripple:  | $\leq 1.0$ dB at $f_0 \pm 4.5$ kHz           |
| 2.2.3. Group delay distortion:                        | $\leq 40$ $\mu$ s at $f_0 \pm 5.5$ kHz       |
| 2.2.4. Insertion loss:                                | $\leq 5.0$ dB                                |
| ( measured on smallest attenuation in pass band )     |  |
| <b>2.3. Stop band</b>                                 |  |
| 2.3.1. $f_0 \pm 17$ kHz                               | $\geq 25$ dB                                 |
| 2.3.2. $f_0 \pm 40$ kHz                               | $\geq 60$ dB                                 |
| 2.3.3. $f_0 \pm 50$ kHz                               | $\geq 70$ dB                                 |
| 2.3.4. $f_0 \pm ( 100 \pm 5 )$ kHz                    | $\geq 70$ dB                                 |
| 2.3.5. $f_0 - ( 900 \pm 5 )$ kHz                      | $\geq 80$ dB                                 |
| 2.3.6. $f_0 + ( 900 \pm 5 )$ kHz                      | $\geq 90$ dB ( except spurious )             |
| 2.4. Terminating impedance R//C ( input and output ): | 50 $\Omega$ // 0 pF                          |
| <b>2.5. Intermodulation</b>                           |  |
| 2.5.1. Out band - intermodulation frequencies :       | $f_0 \pm 50$ kHz / $f_0 \pm 100$ kHz         |
| input power level:                                    | -10 dBm                                      |
| IM:   | $\geq 90$ dB                                 |
| 3. Marking:   | manufacturer, date code<br>MQF 44.85-1300/06 |
| 4. Environment conditions:                            | Corresponding to Vectron standard CF001      |