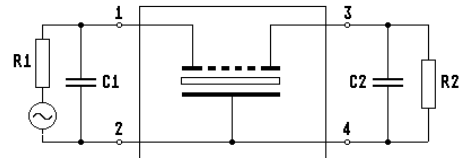
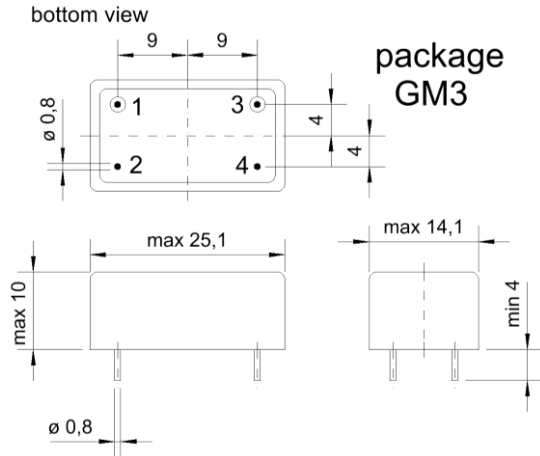


Specification for monolithic crystal filter:

**MQF 45.0-0600/05**

**1. General**

1.1. Package:



- 1.2. Type name: MQF 45.0-0600/05
- 1.3. Number of poles: 10
- 1.4. Operating temperature range: -40°C to +85°C
- 1.5. Storage temperature range: -45°C to +85°C

**2. Electric values**

- 2.1. Nominal centre frequency  $f_0$ : 45.0 MHz
- 2.2. **Pass band**
  - 2.2.1. Centre frequency  $f_c$  at +25°C: 45.0 MHz  $\pm$  450 Hz
  - 2.2.2. Bandwidth between 3 dB - frequencies:  $> f_c \pm 3.0$  kHz
  - 2.2.3. Ripple:  $< 2.0$  dB at  $f_c \pm 2.0$  kHz
  - 2.2.4. Insertion loss:  $< 9.0$  dB  
( measured on smallest attenuation in pass band )
- 2.3. **Stop band**
  - 2.3.1.  $f_c \pm 7.0$  kHz  $> 60$  dB
  - 2.3.2. Alternate Attenuation  $> 80$  dB (except spurious)
- 2.4. Maximum input power level: 0 dBm / +20 dBm ( working / non-damaged )
- 2.5. Terminating impedance R//C ( input and output ): 50  $\Omega$  // 0 pF

3. Marking:



- 4. Environment conditions: Corresponding to Vectron standard CF001