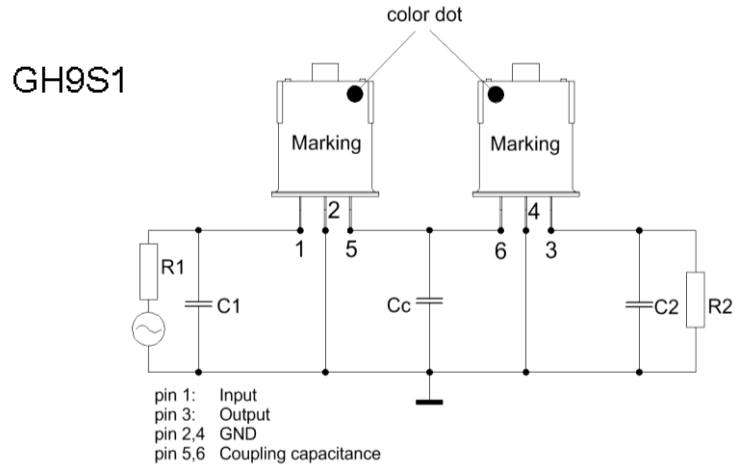
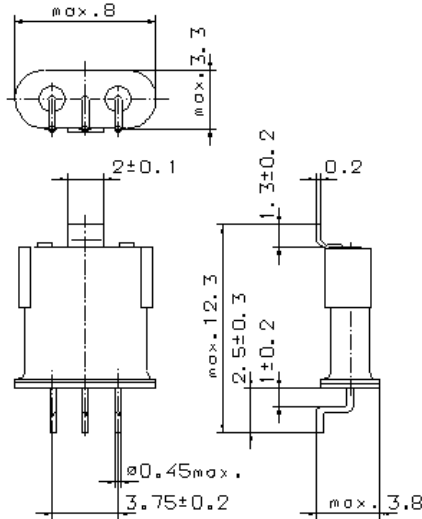


Specification for monolithic crystal filter:

MQF 45.0 - 0750/20

1. General

1.1. Package (each filter consist of a matched pair of two packages GH9S1):



- | | |
|-----------------------------------|------------------|
| 1.2. Type name: | MQF 45.0-0750/20 |
| 1.3. Number of poles: | 4 |
| 1.4. Operable temperature range: | -30°C to +80°C |
| 1.5. Operating temperature range: | -25°C to +70°C |
| 1.6. Storage temperature range: | -55°C to +80°C |

2. Electric values

- | | |
|---|--------------------------|
| 2.1. Nominal centre frequency fo: | 45.0 MHz |
| 2.2. Pass band | |
| 2.2.1. Bandwidth between 3 dB - frequencies: | ≥ fo ± 3.75 kHz |
| 2.2.2. Ripple: | ≤ 1.0 dB at fo ± 3.0 kHz |
| 2.2.3. Insertion loss:
(measured on smallest attenuation in pass band) | ≤ 5.0 dB |
| 2.3. Stop band | |
| 2.3.1. fo ± 12.5 kHz | ≥ 30 dB |
| 2.3.2. fo ± 910 kHz | ≥ 90 dB |
| 2.4. Terminating impedance R//C (input and output): | 350 Ω // 6.5 pF |
| 2.4.1. Coupling capacitance (Cc): | 18 pF |

3. Marking: manufacturer, date code
45.0-0750/20

4. Environment conditions: Corresponding to Vectron standard CF001

Edited by: _____ date: _____ name: _____