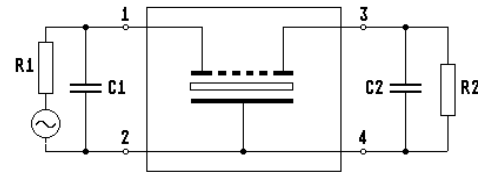
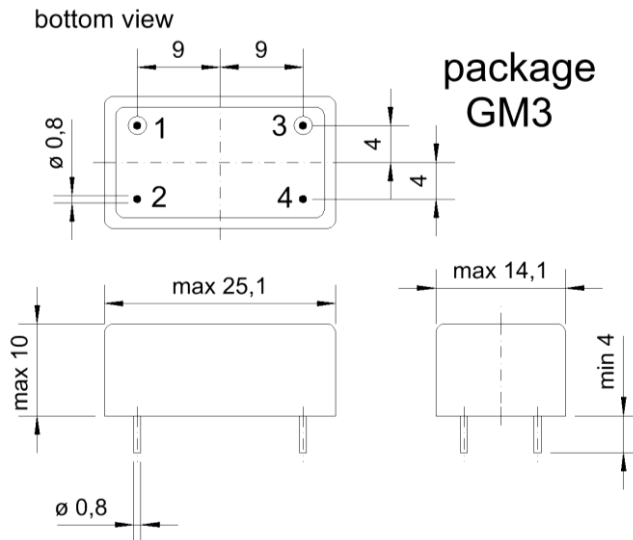


Specification for monolithic crystal filter:

**MQF 45.0-1300/03**

**1. General**

1.1. Package:

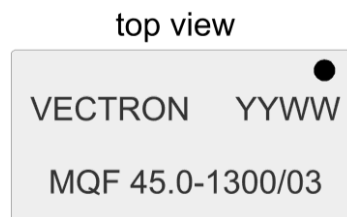


- 1.2. Type name: MQF 45.0-1300/03
- 1.3. Number of poles: 6
- 1.4. Operating temperature range: -55°C to +85°C
- 1.5. Storage temperature range: -55°C to +85°C

**2. Electric values**

- 2.1. Nominal centre frequency  $f_0$ : 45.0 MHz
- 2.2. **Pass band**
  - 2.2.1. Bandwidth between 3 dB - frequencies:  $> f_0 \pm 6.5$  kHz
  - 2.2.2. Ripple within  $f_0 \pm 4.5$  kHz:  $< 1.0$  dB ( peak to peak )
  - 2.2.3. Insertion loss:  $< 4.0$  dB
- 2.3. **Stop band**
  - 2.3.1.  $f_0 \pm 22$  kHz:  $> 40$  dB
  - 2.3.2.  $f_0 \pm 28$  kHz:  $> 60$  dB
  - 2.3.3.  $f_0 \pm 39$  kHz:  $> 60$  dB
  - 2.3.4. Guaranteed attenuation within  $f_0 \pm 39$  kHz... $f_0 \pm 10$  MHz:  $> 80$  dB ( except spurious )
  - 2.3.5. Spurious responses within  $f_0 + 50$  kHz..... $f_0 + 2.0$  MHz:  $> 50$  dB
- 2.4. Terminating impedance ( input and output ):  $50 \Omega // 0$  pF

3. Marking:



- 4. Environment conditions: Corresponding to Vectron MIL standard

Edited by: \_\_\_\_\_ date: \_\_\_\_\_ name: \_\_\_\_\_