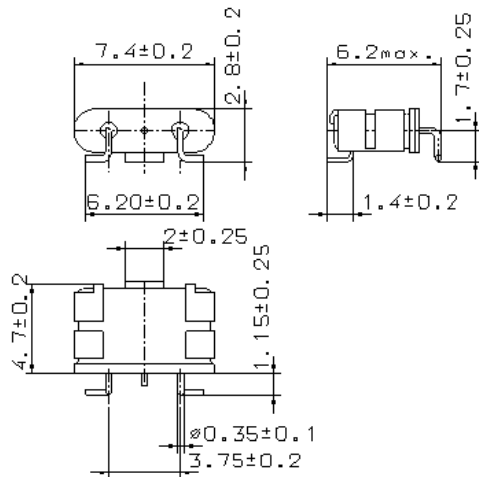


Specification for monolithic crystal filter:

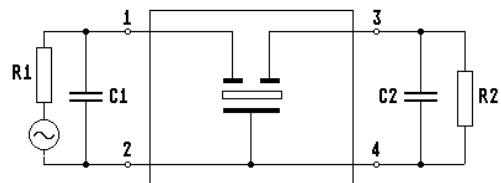
MQF 45.0-1500/52

1. General

1.1. Package: The filters have to be RoHS compliant



GH13S2



- | | |
|-----------------------------------|------------------|
| 1.2. Type name: | MQF 45.0-1500/52 |
| 1.3. Number of poles: | 2 |
| 1.4. Operating temperature range: | -20°C to +70°C |
| 1.5. Storage temperature range: | -45°C to +85°C |

2. Electric values

2.1. Nominal centre frequency f_0 : 45.0 MHz

2.2. Pass band

- | | |
|---|---|
| 2.2.1. Bandwidth between 3 dB - frequencies: | $\geq f_0 \pm 7.5 \text{ kHz}$ |
| 2.2.2. Ripple: | $\leq 1.0 \text{ dB at } f_0 \pm 5.0 \text{ kHz}$ |
| 2.2.3. Insertion loss:
(measured on smallest attenuation in pass band) | $\leq 2.0 \text{ dB}$ |

2.3. Stop band

- | | |
|---|------------------------------|
| 2.3.1. $f_0 \pm 25 \text{ kHz}$ | $\geq 15 \text{ dB}$ |
| 2.3.2. $f_0 - 910 \text{ kHz}$ | $\geq 65 \text{ dB}$ |
| 2.4. Terminating impedance R//C (input and output): | $650 \Omega // 3 \text{ pF}$ |

2.5. Maximum drive level: 0 dBm

3. Marking: M45A
VI date code

4. Environment conditions: Corresponding to Vectron standard CF001

Edited by: _____ date: _____ name: _____