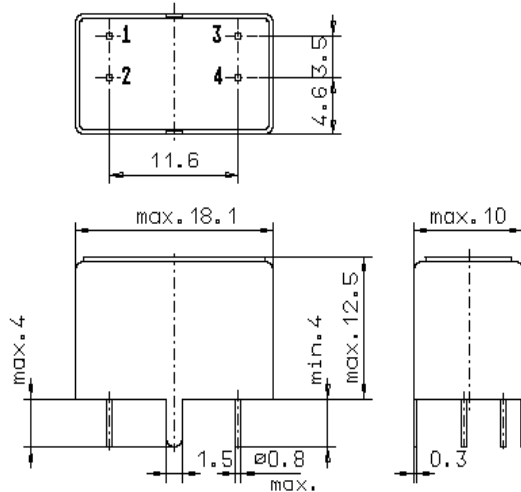


Specification for monolithic crystal filter:

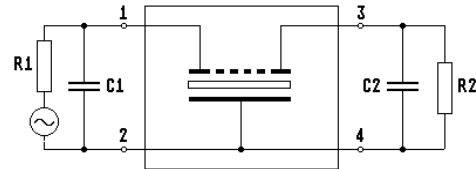
MQF 45.0-2500/02

1. General

1.1. Package:



GM21



- | | |
|-----------------------------------|------------------|
| 1.2. Type name: | MQF 45.0-2500/02 |
| 1.3. Number of poles: | 4 |
| 1.4. Operable temperature range: | -30°C to +80°C |
| 1.5. Operating temperature range: | -25°C to +70°C |
| 1.6. Storage temperature range: | -55°C to +80°C |

2. Electric values

- | | |
|---|---|
| 2.1. Nominal centre frequency f_0 : | 45.0 MHz |
| 2.2. Pass band | |
| 2.2.1. Bandwidth between 3 dB - frequencies: | $\geq f_0 \pm 12.5$ kHz |
| 2.2.2. Ripple: | ≤ 1.0 dB at $f_0 \pm 8$ kHz |
| 2.2.3. Group delay distortion: | ≤ 2.5 μ s at $f_0 \pm 8$ kHz |
| 2.2.4. Insertion loss:
(measured on smallest attenuation in pass band) | ≤ 4.0 dB |
| 2.3. Stop band | |
| 2.3.1. $f_0 \pm 900$ kHz | ≥ 80 dB |
| 2.3.2. Spurious responses: | ≥ 30 dB |
| 2.4. Terminating impedance (input and output): | 50 Ω // 0 pF |
| 2.5. Maximum input power level: | 10 mW |
| 3. Marking: | manufacturer, date code
MQF 45.0-2500/02 |
| 4. Environment conditions: | Corresponding to Vectron standard CF001 |

Edited by: _____ date: _____ name: _____