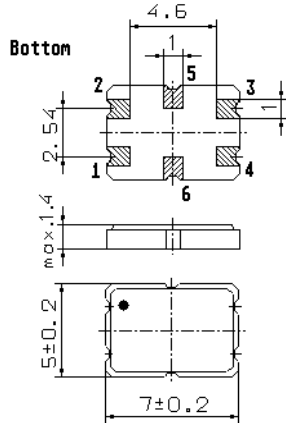


Specification for monolithic crystal filter:

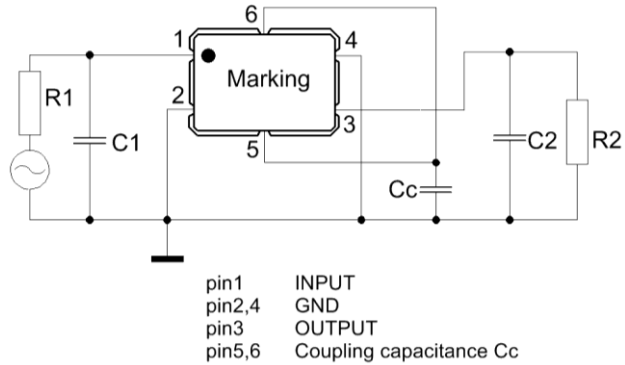
MQF 45.0-3000/23

1. General

1.1. Package:



GS 2

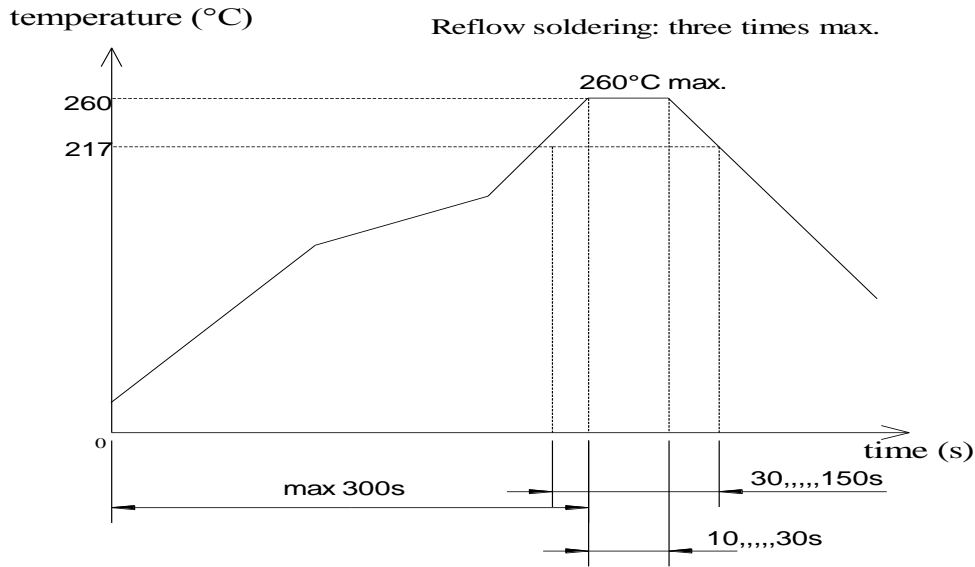


- | | |
|-----------------------------------|------------------|
| 1.2. Type name: | MQF 45.0-3000/23 |
| 1.3. Number of poles: | 4 |
| 1.4. Operating temperature range: | -40°C to +85°C |
| 1.5. Storage temperature range: | -45°C to +85°C |

2. Electric values

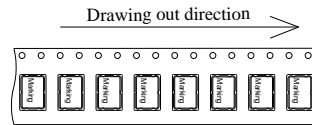
- | | |
|---|---|
| 2.1. Nominal centre frequency fo: | 45.0 MHz |
| 2.2. Pass band | |
| 2.2.1. Bandwidth between 3 dB - frequencies: | > fo ± 15.0 kHz |
| 2.2.2. Ripple: | < 1.0 dB at fo ± 10.0 kHz |
| 2.2.3. Insertion loss:
(measured on smallest attenuation in pass band) | < 3.0 dB |
| 2.3. Stop band | |
| 2.3.1. fo ± 50.0 kHz: | > 30 dB |
| 2.3.2. fo ± 100 kHz: | > 50 dB (expect spurious) |
| 2.3.3. Alternate attenuation: | > 50 dB (expect spurious) |
| 2.3.4. Spurious responses: | > 20 dB in the range fo ± 1000 kHz |
| 2.4. Maximum input power (working/non-damaged): | 0 / +15 dBm |
| 2.5. Terminating impedance R/C (input and output): | 1500 Ω // 0.7 pF |
| 2.5.1. Coupling capacitance (Cc): | 3.0 pF |
| 3. Marking: | M45B6
date code |
| 4. Environment conditions: | Corresponding to Vectron standard CF001 |
| 5. Filters are Pb-free and 2002 /95 / EC RoHS compliant | |

6. Reflow soldering conditions:

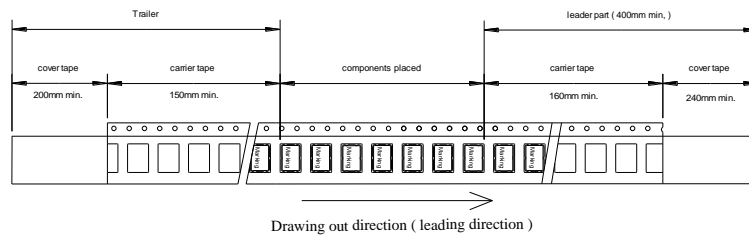


7. Packing

maximum 1000 pcs. / reel

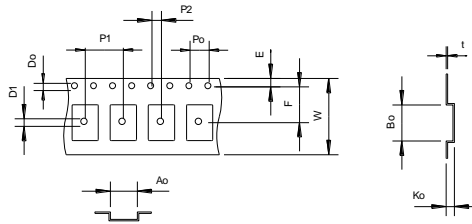


Tape dimension (mm)



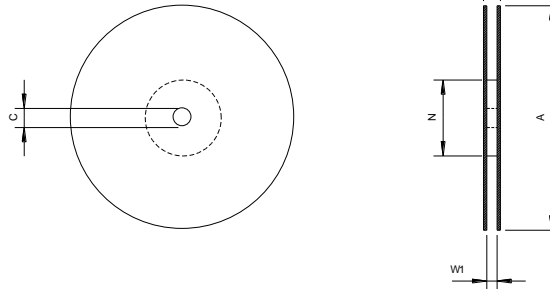
Tape (all dimensions in mm)

- W: 16.0 ± 0.1
- Po: 4.0 ± 0.1
- P1: 8.0 ± 0.1
- P2: 2.0 ± 0.1
- Do: 1.5 + 0.1 / - 0
- D1: 1.6 + 0.1 / - 0
- E: 1.75 ± 0.1
- F: 7.5 ± 0.1
- Ko: 1.7 ± 0.1
- Ao: 5.6 ± 0.1
- Bo: 7.6 ± 0.1
- t: 0.3 ± 0.05



Reel (all dimension in mm)

- A: $\varnothing 178 \pm 2$
- C: $\varnothing 13 \pm 0.5$
- N: $\varnothing 60 \pm 1$
- W1: 17.5 ± 1.5
- W2: 21.5 ± 1.5



Edited by: _____ date: _____ name: _____