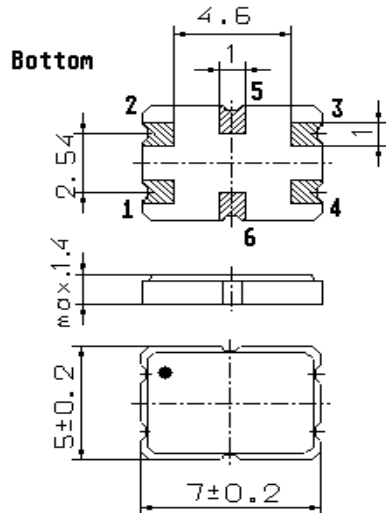


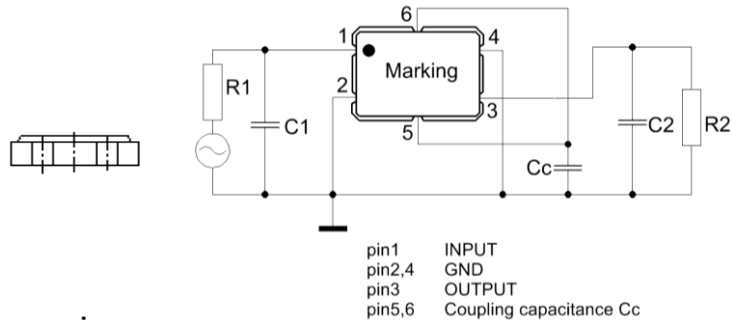
Specification for monolithic crystal filter: **MQF 45.0 - 3000 / 31**

1. General

1.1. Package:



GS 2



1.2. Type name:

MQF 45.0-3000/31

1.3. Number of poles:

4

1.4. Operating temperature range:

-40°C to +85°C

1.5. Storage temperature range:

-55°C to +125°C

2. Electric values

2.1. Nominal centre frequency f_0 :

45.0 MHz

2.2. Pass band

2.2.1. Bandwidth between 3 dB - frequencies:

$> f_0 \pm 15.0$ kHz

2.2.2. Bandwidth between 6 dB - frequencies:

$> f_0 \pm 17.0$ kHz

2.2.3. Ripple (peak to peak):

< 1.0 dB at $f_0 \pm 12.0$ kHz

2.2.4. Insertion loss:

< 3.0 dB

(measured on smallest attenuation in pass band)

2.3. Stop band

2.3.1. $f_0 \pm 30$ kHz:

> 20 dB

2.3.2. $f_0 \pm 50$ kHz:

> 35 dB

2.3.3. Alternate attenuation ($f_0 - 910$ kHz):

> 80 dB

2.3.4. Spurious response:

> 40 dB

2.4. Terminating impedance R//C (input and output):

$800 \Omega // 1.7$ pF

2.4.1 Coupling capacitance Cc:

6.0 pF

2.5. Maximum input power level (working / non damaged): +5 dBm / +15 dBm

3. Marking:

•M45B9

date code

4. Environment conditions:

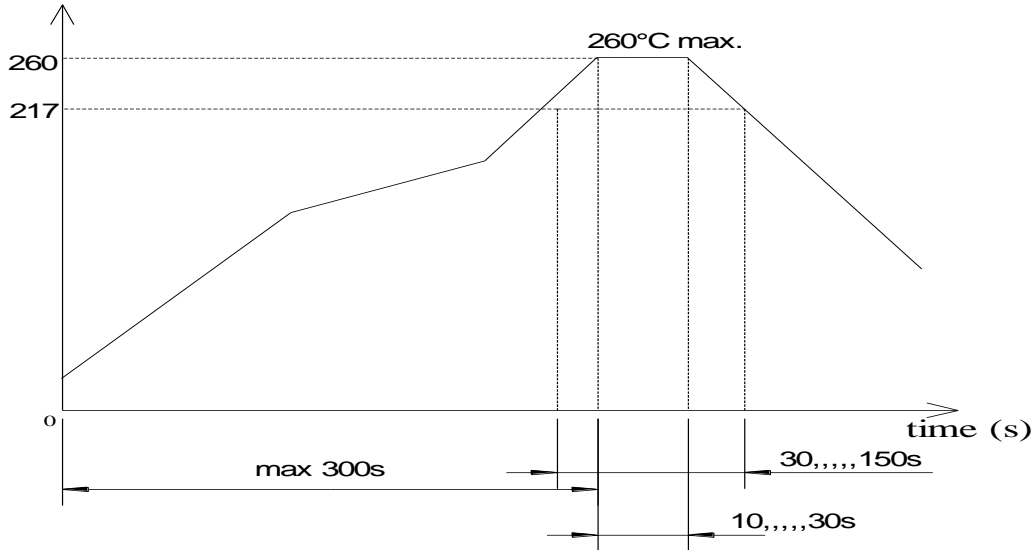
corresponding to Vectron CF001

5. Filters are Pb-free and 2002 /95 / EC RoHS compliant

6. Reflow soldering conditions:

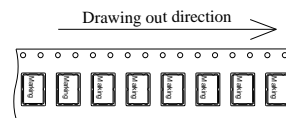
temperature (°C)

Reflow soldering: three times max.

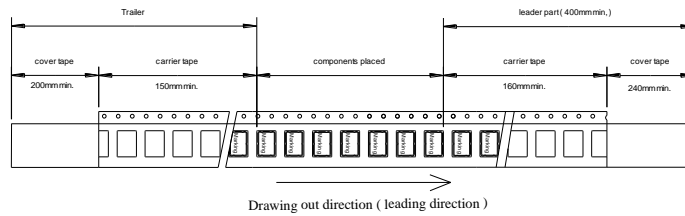


7. Packing

maximum 1000 pcs. / reel

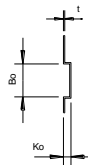
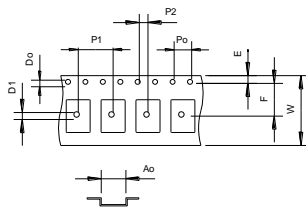


Tape dimension (mm)



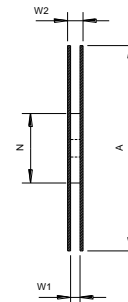
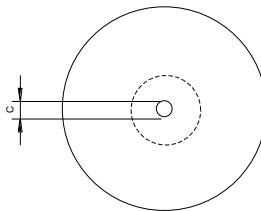
Tape (all dimensions in mm)

- W: 16.0±0.1
- Pc: 4.0±0.1
- P1: 8.0±0.1
- P2: 2.0±0.1
- Dx: 1.5+0.1/-0
- D1: 1.6+0.1/-0
- E: 1.75±0.1
- F: 7.5±0.1
- Kx: 1.7±0.1
- Ax: 5.6±0.1
- Bx: 7.6±0.1
- t: 0.3±0.05



Reel (all dimension in mm)

- A: $\varnothing 178 \pm 2$
- C: $\varnothing 13 \pm 0.5$
- N: $\varnothing 60 \pm 1$
- W1: 17.5 ± 1.5
- W2: 21.5 ± 1.5



Edited by: _____ date: _____ name: _____