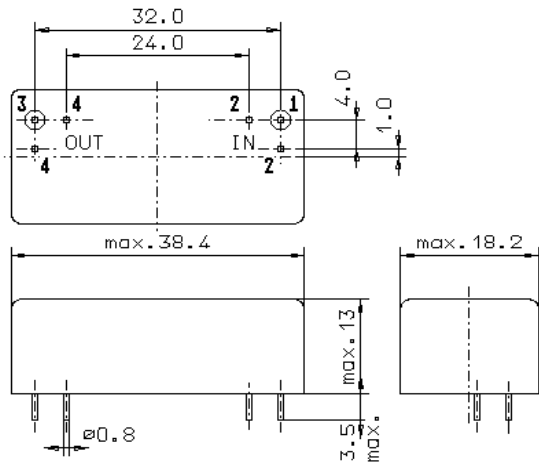


Specification for monolithic crystal filter:

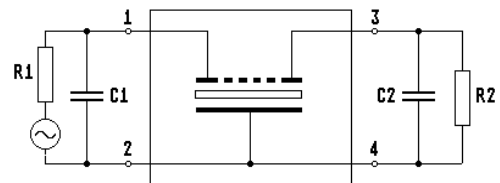
MQF 50.0-8000/06

1. General

1.1. Package:



GM17



- | | |
|-----------------------------------|------------------|
| 1.2. Type name: | MQF 50.0-8000/06 |
| 1.3. Number of poles: | 6 |
| 1.4. Operating temperature range: | -10°C to +60°C |
| 1.5. Storage temperature range: | -20°C to +70°C |

2. Electric values

- | | |
|---|---|
| 2.1. Nominal centre frequency f_0 : | 50.0 MHz |
| 2.2. Pass band | |
| 2.2.1. Bandwidth between 1 dB - frequencies: | $\geq f_0 \pm 40$ kHz |
| 2.2.2. Ripple: | ≤ 1.0 dB at $f_0 \pm 40$ kHz |
| 2.2.3. Insertion loss:
(measured on smallest attenuation in pass band) | ≤ 4.0 dB |
| 2.3. Stop band | |
| 2.3.1. $f_0 \pm 70$ kHz | ≥ 25 dB (except spurious) |
| 2.3.2. $f_0 \pm 125$ kHz | ≥ 60 dB (except spurious) |
| 2.3.3. Alternate attenuation: | ≥ 60 dB (except spurious) |
| 2.4. Terminating impedance (input and output): | $50 \Omega // 0$ pF |
| 2.5. Maximum input power level (operating): | +6 dBm |
| 3. Marking: | manufacturer, date code
MQF 50.0-8000/06 |
| 4. Environment conditions: | Corresponding to Vectron standard CF001 |

Edited by: _____ date: _____ name: _____