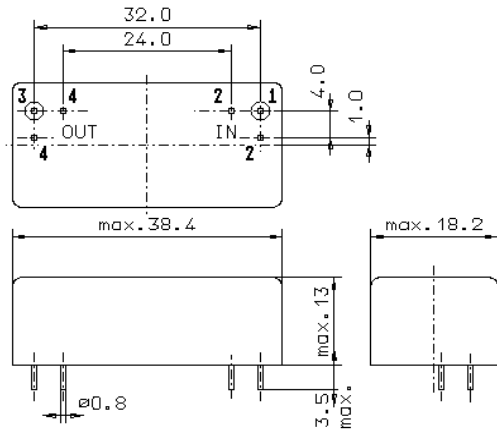


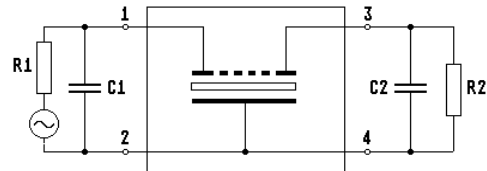
Specification for monolithic crystal filter **MQF 53.3 - 1000 / 03 V 1**

**1. General**

1.1. Package:



GM17



- |                                   |                    |
|-----------------------------------|--------------------|
| 1.2. Type name:                   | MQF 53.3-1000/03V1 |
| 1.3. Number of poles:             | 6                  |
| 1.4. Operating temperature range: | -20°C to +70°C     |
| 1.5. Storage temperature range:   | -35°C to +85°C     |

**2. Electric values**

- |   |   |
|---|---|
| 2.1. Nominal centre frequency fo:   | 53.3 MHz                                      |
| 2.2. <b>Pass band</b>   |   |
| 2.2.1. Bandwidth between 1 dB - frequencies:                                | $\geq f_o \pm 5$ kHz                          |
| 2.2.2. Ripple:  | $\leq 1.0$ dB at $f_o \pm 5.0$ kHz            |
| 2.2.3. Insertion loss:<br>( measured on smallest attenuation in pass band ) | $\leq 4.0$ dB                                 |
| 2.2.4. VSWR ( at $f_o \pm 5.0$ kHz ):                                       | $< 2$ ( equal to return loss $> 9.54$ dB )    |
| 2.3. <b>Stop band</b>   |   |
| 2.3.1. $f_o \pm 30$ kHz   | $\geq 60$ dB ( except spurious )              |
| 2.3.2. Alternate attenuation ( $f_o -2.93.....-2.83$ MHz )                  | $\geq 80$ dB                                  |
| 2.4. Terminating impedance ( input and output ):                            | $50 \Omega // 0$ pF                           |
| 2.5. Out band intermodulation ( IP3 $> 27$ dBm )                            |   |
| - frequencies:  | 53.32 MHz / 53.34 MHz                         |
| - power level at pin 1:   | -7 dBm  |
| - relative attenuation at fo relating to level at pin 1 :                   | $> 68$ dB                                     |
| 3. Marking:   | manufacturer, date code<br>MQF 53.3-1000/03V1 |
| 4. Environment conditions:  | Corresponding to Vectron standard CF001       |

Edited by: \_\_\_\_\_ date: \_\_\_\_\_ name: \_\_\_\_\_