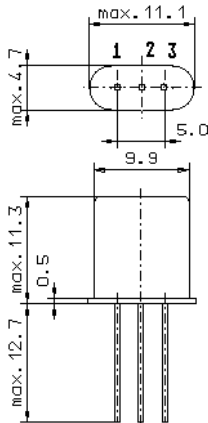


Specification for monolithic crystal filter:

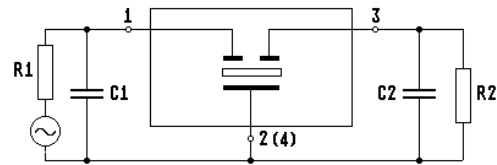
**MQF 6.0-0750/01**

1. General

1.1. Package:



GH3



- |                                   |                 |
|-----------------------------------|-----------------|
| 1.2. Type name:                   | MQF 6.0-0750/01 |
| 1.3. Number of poles:             | 2               |
| 1.4. Operating temperature range: | -20°C to +70°C  |
| 1.5. Storage temperature range:   | -45°C to +85°C  |

2. Electric values

- |   |  |
|---|--|
| 2.1. Nominal centre frequency $f_0$ :                 | 6.0 MHz                                    |
| 2.2. <b>Pass band</b>                                 |  |
| 2.2.1. Bandwidth between 3 dB - frequencies:          | $> f_0 \pm 3.75$ kHz                       |
| 2.2.2. Ripple:  | $< 1.0$ dB at $f_0 \pm 2.5$ kHz            |
| 2.2.3. Insertion loss:                                | $< 2.0$ dB                                 |
| ( measured on smallest attenuation in pass band )     |  |
| 2.3. <b>Stop band</b>                                 |  |
| 2.3.1. $f_0 \pm 35$ kHz                               | $> 35$ dB                                  |
| 2.3.2. Alternate Attenuation                          | $> 35$ dB (except spurious)                |
| 2.4.1. Nominal input power level                      | 10 dBm                                     |
| 2.4.2. Maximal input power level                      | 30 dBm                                     |
| 2.5. Terminating impedance R//C ( input and output ): | $5000 \Omega // 0$ pF                      |
| 3. Marking:   | manufacturer, date code<br>6.0-<br>0750/01 |
| 4. Environment conditions:                            | Corresponding to Vectron CF001             |

Edited by: \_\_\_\_\_ date: \_\_\_\_\_ name: \_\_\_\_\_