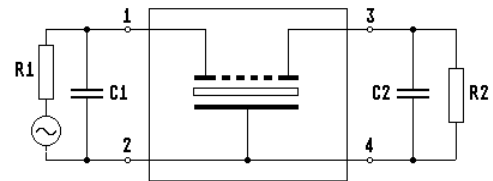
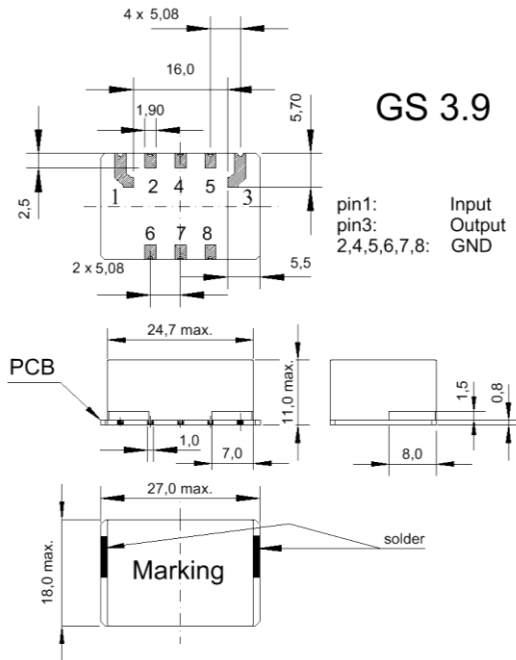


Specification for monolithic crystal filter:

MQF 67.0-1000/02

1. General

1.1. Package:



- 1.2. Type name: MQF 67.0-1000/02
- 1.3. Number of poles: 4
- 1.4. Operating temperature range: -40°C to +85°C
- 1.5. Storage temperature range: -40°C to +120°C

2. Electric values

- 2.1. Nominal centre frequency fo: 67.0 MHz

2.2. Pass band

- 2.2.1. Bandwidth between 3 dB - frequencies: > fo ± 5.0 kHz
- 2.2.2. Ripple: < 1.0 dB at fo ± 3 kHz
- 2.2.3. Insertion loss: < 5.0 dB
(measured on smallest attenuation in pass band)

2.3. Stop band

- 2.3.1. fo ± 30 kHz > 30 dB
- 2.3.2. Alternate attenuation > 50 dB (except spurious)

- 2.4. Terminating impedance (input and output): 50 Ω // 0 pF

- 2.5. Maximum input power level: -10 dBm / +10 dBm (working / non damaged)

- 3. Marking: manufacturer, date code
MQF 67.0-1000/02

- 4. Environment conditions: Vectron MIL standard

Edited by: _____ date: _____ name: _____