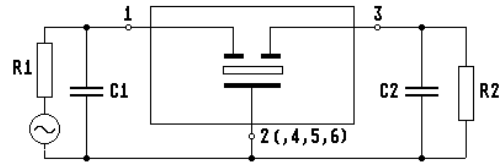
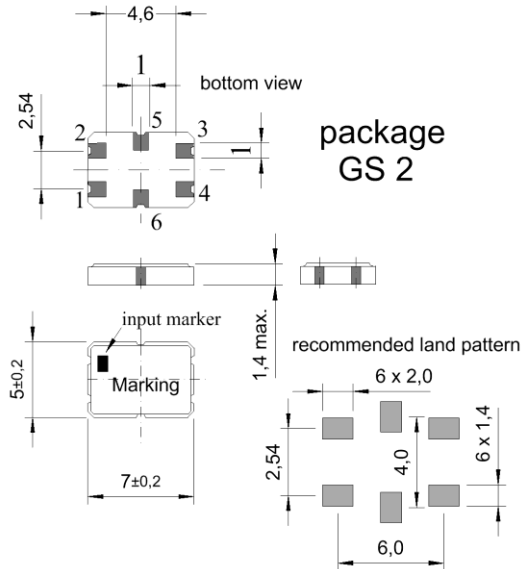


Specification for monolithic crystal filter: **MQF 67.5-2400/01**

**1. General**

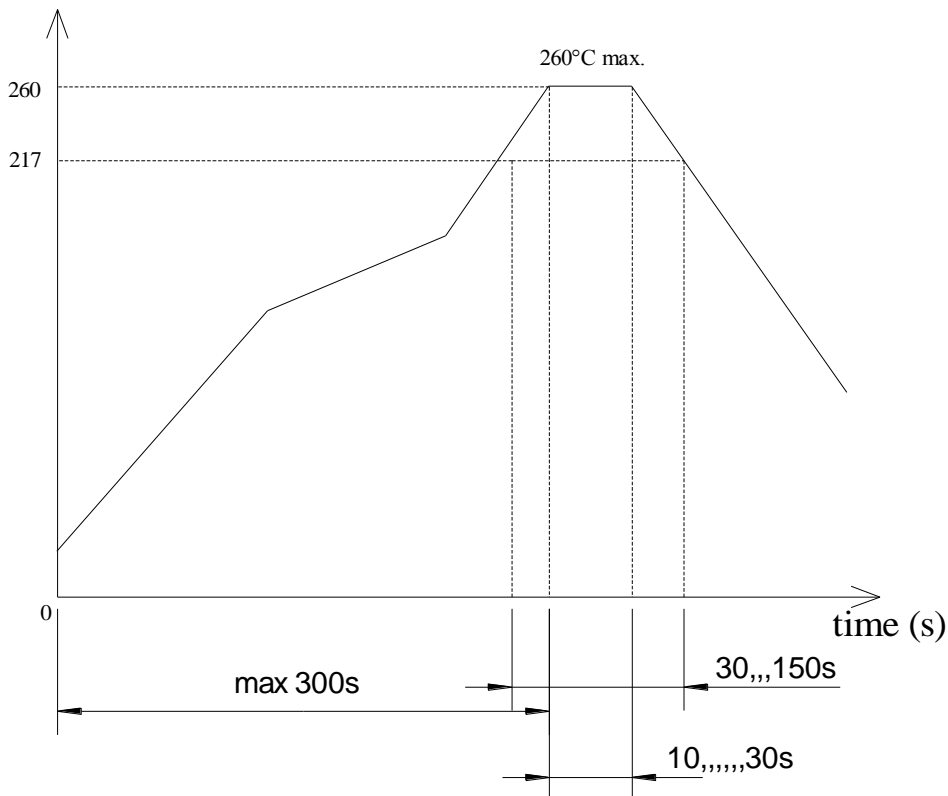
**1.1. Package:**



Terminate plate materials: Ni / Au  
 Ni > 2.0  $\mu\text{m}$   
 Au > 0.75  $\mu\text{m}$

Reflow profile corresponding to IPC / JEDEC J-STD-020C

temperature ( $^{\circ}\text{C}$ )



Reflow soldering: three times max.

1.2. Type name:	MQF 67.5-2400/01
1.3. Number of poles:	2
1.4. Operating temperature range:	-40°C to +90°C
1.5. Storage temperature range:	-45°C to +95°C
<b>2. Electric values</b>	
2.1. Nominal centre frequency fo:	67.5 MHz
<b>2.2. Pass band</b>	
2.2.1. Bandwidth between 0.6 dB - frequencies:	> fo ± 12 kHz
2.2.2. Ripple:	< 0.6 dB at fo ± 12 kHz
2.2.3. Group delay absolute at fo:	8 µs ± 3 µs
2.2.4. Group delay distortion at fo ± 12 kHz:	< 12 µs
2.2.5. Insertion loss: ( measured on smallest attenuation in pass band )	< 4.0 dB
<b>2.3. Stop band</b>	
2.3.1. fo ± 50 kHz	> 10 dB
2.3.2. fo ± 200 kHz	> 30 dB
2.3.3. Alternate attenuation fo ± 5 MHz:	> 40 dB ( except spurious )
2.3.4. Maximum input power level:	+10 dBm
2.4. Terminating impedance ( input and output ):	1350 Ω // -0.6 pF
3. Marking:	M675A1 date code
4. Environment conditions	corr. to Vectron MIL standard

---

Edited by:    date: \_\_\_\_\_    name: \_\_\_\_\_