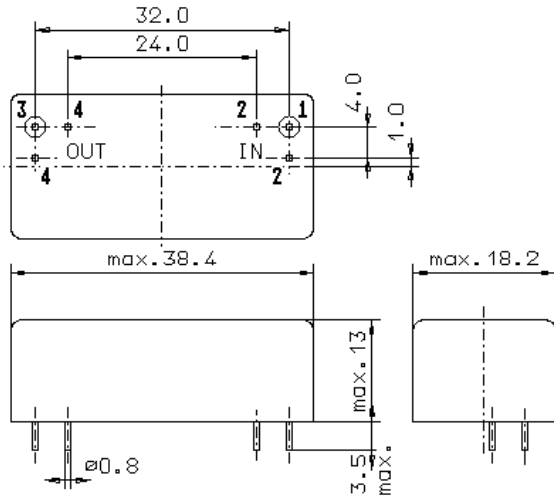


Specification for monolithic crystal filter

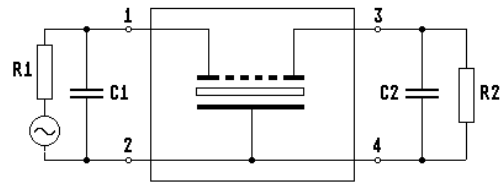
**MQF 70.0-0600/04**

**1. General**

1.1. Package:



GM17



- |                                   |                  |
|-----------------------------------|------------------|
| 1.2. Type name:                   | MQF 70.0-0600/04 |
| 1.3. Number of poles:             | 8                |
| 1.4. Operating temperature range: | -55°C to +60°C   |
| 1.5. Storage temperature range:   | -55°C to +85°C   |

**2. Electric values**

- |                                   |          |
|-----------------------------------|----------|
| 2.1. Nominal centre frequency fo: | 70.0 MHz |
|-----------------------------------|----------|

**2.2. Pass band**

- |   |   |
|---|---|
| 2.2.1. Bandwidth between 3 dB - frequencies:                                | $\geq f_0 \pm 3.0 \text{ kHz}$                    |
| 2.2.2. Ripple:  | $\leq 2.0 \text{ dB at } f_0 \pm 2.5 \text{ kHz}$ |
| 2.2.3. Insertion loss:<br>( measured on smallest attenuation in pass band ) | $\leq 6.0 \text{ dB}$                             |

**2.3. Stop band**

- |  |  |
|--|--|
| 2.3.1. $f_0 \pm 12.5 \text{ kHz}$  | $\geq 65 \text{ dB}$                     |
| 2.3.2. $f_0 \pm 12.5 \text{ kHz} \dots \dots \dots \pm 1000 \text{ kHz}$ | $\geq 65 \text{ dB}$                     |
| 2.3.3. $f_0 \pm 910 \text{ kHz}$   | $\geq 85 \text{ dB ( except spurious )}$ |
| 2.3.4. Spurious responses:   | $\geq 40 \text{ dB}$                     |

- |  |   |
|--|---|
| 2.4. Terminating impedance ( input and output ): | $50 \Omega // 0 \text{ pF}$                                 |
| 2.5. Maximum input power level:                  | $0 \text{ dBm} / +10 \text{ dBm ( working / non-damaged )}$ |

- |             |   |
|-------------|---|
| 3. Marking: | manufacturer, date code<br>MQF 70.0-0600/04 |
|-------------|---|

- |                            |   |
|----------------------------|---|
| 4. Environment conditions: | Corresponding to Vectron standard CF001 |
|----------------------------|---|

edited by: \_\_\_\_\_ date: \_\_\_\_\_ name: \_\_\_\_\_