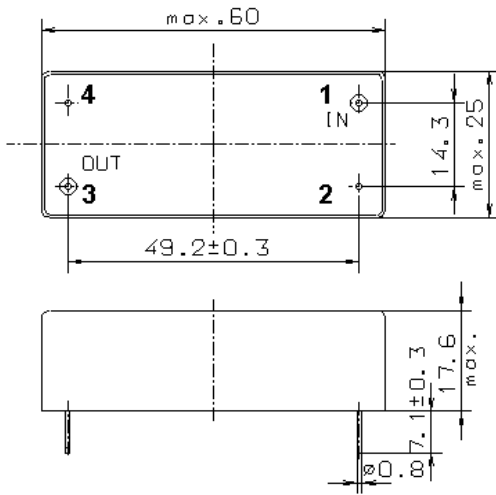


Specification for monolithic crystal filter

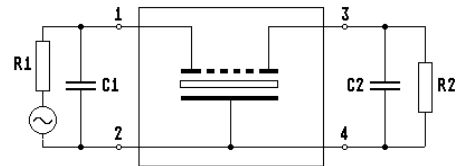
**MQF 70.0-1000/08**

**1. General**

1.1. Package:



**GM34.2**



- |                                   |                  |
|-----------------------------------|------------------|
| 1.2. Type name:                   | MQF 70.0-1000/08 |
| 1.3. Number of poles:             | 8                |
| 1.4. Operating temperature range: | -10°C to +60°C   |
| 1.5. Storage temperature range:   | -20°C to +70°C   |

**2. Electric values**

- |   |   |
|---|---|
| 2.1. Nominal centre frequency $f_0$ :                                       | 70.0 MHz                                    |
| 2.2. <b>Pass band</b>   |   |
| 2.2.1. Bandwidth between 3 dB - frequencies:                                | $\geq f_0 \pm 5.0$ kHz                      |
| 2.2.2. Ripple:  | $\leq 1.0$ dB at $f_0 \pm 3.0$ kHz          |
| 2.2.3. Insertion loss:<br>( measured on smallest attenuation in pass band ) | $\leq 8.0$ dB                               |
| 2.3. <b>Stop band</b>   |   |
| 2.3.1. $f_0 \pm 17.5$ kHz   | $\geq 60$ dB                                |
| 2.3.2. Alternate attenuation:   | $\geq 60$ dB                                |
| 2.3.3. Spurious responses:  | $\geq 50$ dB                                |
| 2.4. Terminating impedance ( input and output ):                            | 50 $\Omega$ // 0 pF                         |
| 2.5. Maximum input power level:   | 0 dBm / +10 dBm ( working / non-damaged )   |
| 3. Marking:   | manufacturer, date code<br>MQF 70.0-1000/08 |
| 4. Environment conditions:  | Corresponding to Vectron standard CF001     |

Edited by: \_\_\_\_\_ date: \_\_\_\_\_ name: \_\_\_\_\_