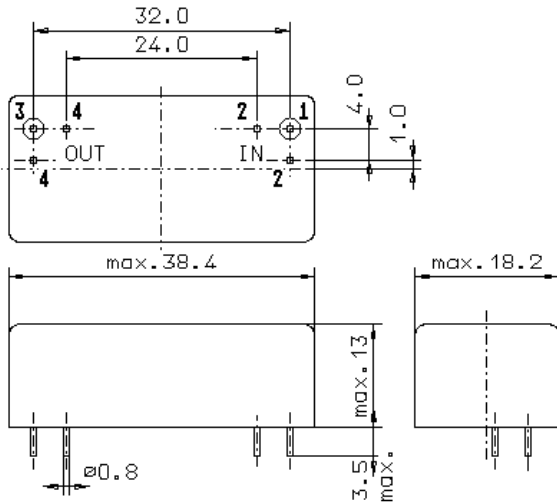


Specification for monolithic crystal filter:

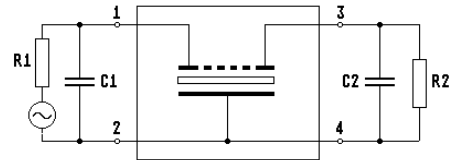
**MQF 70.0-1500/04**

**1. General**

1.1. Package:



GM17



- 1.2. Type name: MQF 70.0-1500/04
- 1.3. Number of poles: 8
- 1.4. Operating temperature range: -20°C to +70°C
- 1.5. Storage temperature range: -35°C to +85°C

**2. Electric values**

- 2.1. Nominal centre frequency  $f_0$ : 70.0 MHz

**2.2. Pass band**

- 2.2.1. Bandwidth between 3 dB - frequencies:  $\geq f_0 \pm 7.5$  kHz
- 2.2.2. Ripple:  $\leq 2.0$  dB at  $f_0 \pm 5.0$  kHz
- 2.2.3. Insertion loss:  $\leq 6.0$  dB  
( measured on smallest attenuation in pass band )

**2.3. Stop band**

- 2.3.1.  $f_0 \pm 17.5$  kHz:  $\geq 60$  dB
- 2.3.2. Alternate attenuation at  $f_0 \pm 910$  kHz:  $\geq 85$  dB
- 2.3.3. Spurious responses:  $\geq 40$  dB

- 2.4. Terminating impedance ( input and output ):  $50 \Omega // 0$  pF

- 3. Marking: manufacturer, date code  
MQF 70.0-1500/04

- 4. Environment conditions: Corresponding to Vectron standard CF001

Edited by: \_\_\_\_\_ date: \_\_\_\_\_ name: \_\_\_\_\_