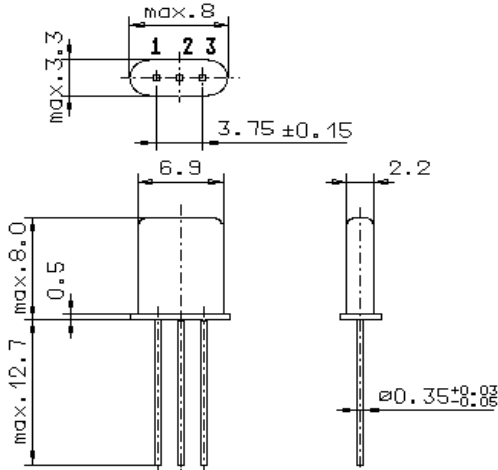


Specification for monolithic crystal filter

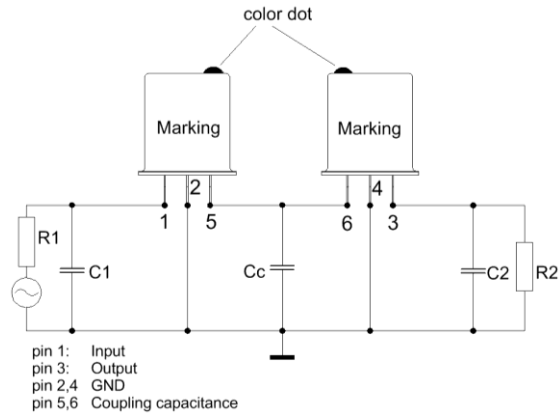
**MQF 70.0-1500/08**

**1. General**

1.1. Package: 2 x GH 9 ( each filter consists of a pair of two matched GH9 packages )



GH9



- |                                   |                  |
|-----------------------------------|------------------|
| 1.2. Type name:                   | MQF 70.0-1500/08 |
| 1.3. Number of poles:             | 4                |
| 1.4. Operating temperature range: | -20°C to +70°C   |
| 1.5. Storage temperature range:   | -35°C to +85°C   |

**2. Electric values**

2.1. Nominal centre frequency  $f_0$ : 70.0 MHz

**2.2. Pass band**

- |   |                                    |
|---|------------------------------------|
| 2.2.1. Bandwidth between 3 dB - frequencies:                                | $\geq f_0 \pm 7.5$ kHz             |
| 2.2.2. Ripple:  | $\leq 1.0$ dB at $f_0 \pm 5.0$ kHz |
| 2.2.3. Insertion loss:<br>( measured on smallest attenuation in pass band ) | $\leq 3.0$ dB                      |

**2.3. Stop band**

- |                         |              |
|-------------------------|--------------|
| 2.3.1. $f_0 \pm 25$ kHz | $\geq 35$ dB |
| 2.3.2. $f_0 - 910$ kHz  | $\geq 80$ dB |

2.4. Terminating impedance ( input and output ): 2000Ω // -1.0 pF

2.4.1. Coupling capacitance  $C_c$ : -1.0 pF

3. Marking: manufacturer, date code  
70.0-1500/08

4. Environment conditions: Corresponding to Vectron standard CF001