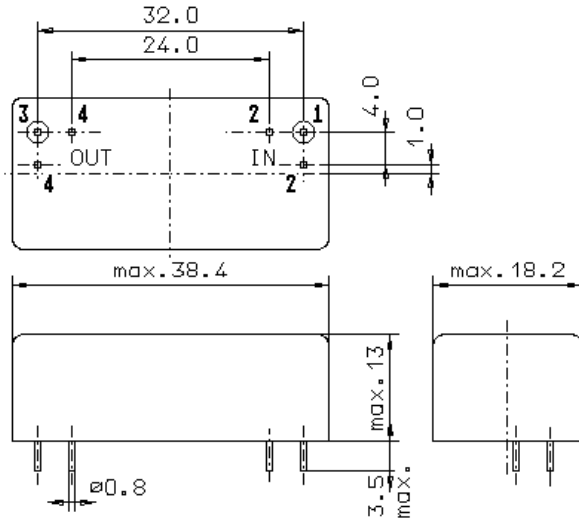


Specification for monolithic crystal filter:

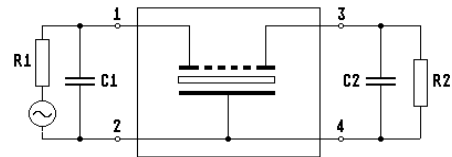
**MQF 70.0 - 1500/17**

## 1. General

### 1.1. Package:



GM17



- |                                   |                  |
|-----------------------------------|------------------|
| 1.2. Type name:                   | MQF 70.0-1500/17 |
| 1.3. Number of poles:             | 6                |
| 1.4. Operating temperature range: | 0°C to +70°C     |
| 1.5. Storage temperature range:   | -45°C to +85°C   |

## 2. Electric values

- |   |   |
|---|---|
| 2.1. Nominal centre frequency $f_0$ :                                       | 70.0 MHz                                    |
| 2.2. <b>Pass band</b>   |   |
| 2.2.1. Bandwidth between 3 dB - frequencies:                                | $> \pm 7.5$ kHz                             |
| 2.2.2. Ripple:  | $< 2.0$ dB at $f_0 \pm 5$ kHz               |
| 2.2.3. Insertion loss:<br>( measured on smallest attenuation in pass band ) | $< 5.0$ dB                                  |
| 2.3. <b>Stop band</b>   |   |
| 2.3.1. $f_0 \pm 25$ kHz   | $> 60$ dB                                   |
| 2.3.2. Alternate attenuation  | $> 60$ dB ( except spurious )               |
| 2.3.3. Spurious responses for $f > f_0 + 60$ kHz                            | $> 40$ dB                                   |
| 2.4. Terminating impedance ( input and output ):                            | $50 \Omega // 0$ pF                         |
| 2.5. VSWR:  | $< 2.0 : 1$ ( return loss $> 9.55$ dB )     |
| 3. Marking:   | manufacturer, date code<br>MQF 70.0-1500/17 |
| 4. Environment conditions:  | according to Vectron standard CF001         |

Edited by: \_\_\_\_\_ date: \_\_\_\_\_ name: \_\_\_\_\_