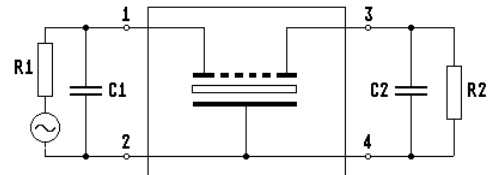
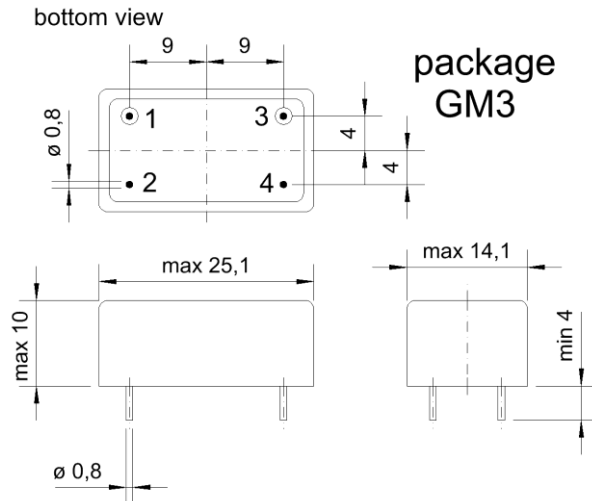


Specification for monolithic crystal filter

**MQF 70.0-2000/11**

**1. General**

1.1. Package:



- |                                   |                  |
|-----------------------------------|------------------|
| 1.2. Type name:                   | MQF 70.0-2000/11 |
| 1.3. Number of poles:             | 4                |
| 1.4. Operating temperature range: | -20°C to +70°C   |
| 1.5. Storage temperature range:   | -35°C to +75°C   |

**2. Electric values**

- |   |   |
|---|---|
| 2.1. Nominal centre frequency $f_0$ :                                       | 70.0 MHz                                  |
| <b>2.2. Pass band</b>   |   |
| 2.2.1. Bandwidth between 3 dB - frequencies:                                | $\geq f_0 \pm 10.0$ kHz                   |
| 2.2.2. Ripple:  | $\leq 1.0$ dB at $f_0 \pm 7.0$ kHz        |
| 2.2.3. Insertion loss:<br>( measured on smallest attenuation in pass band ) | $\leq 3.0$ dB                             |
| 2.2.4. Return loss:   | $> 14.0$ dB at $f_0 \pm 6.0$ kHz          |
| <b>2.3. Stop band</b>   |   |
| 2.3.1. $f_0 \pm 28$ kHz   | $> 25$ dB                                 |
| 2.3.2. $f_0 \pm 40$ kHz   | $> 40$ dB                                 |
| 2.3.3. $f_0 \pm 50$ kHz   | $> 50$ dB                                 |
| 2.3.4. Alternate attenuation $f_0 \pm 910$ kHz                              | $> 70$ dB except spurious                 |
| 2.3.5. Spurious responses:  | $> 30$ dB                                 |
| 2.4. Terminating impedance ( input and output ):                            | $50 \Omega // 0$ pF                       |
| 2.5. Maximum input power level:   | +10dBm / +18dBm ( working / non damaged ) |

- |             |   |
|-------------|---|
| 3. Marking: | manufacturer, date code<br>MQF 70.0-2000/11 |
|-------------|---|

- |                            |   |
|----------------------------|---|
| 4. Environment conditions: | Corresponding to Vectron standard CF001 |
|----------------------------|---|