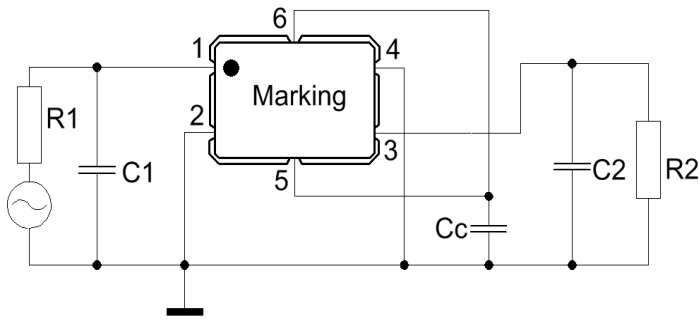


Specification for monolithic crystal filter: **MQF 70.05 - 2000 / 08**

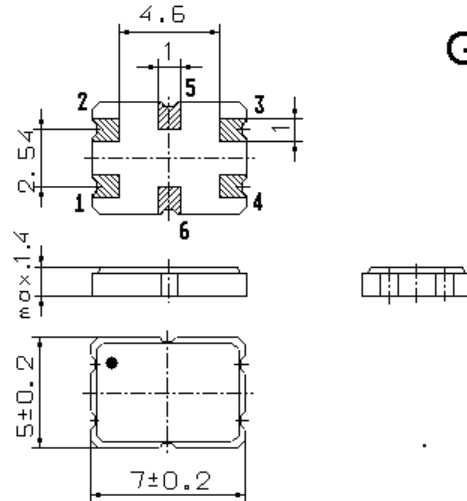
**1. General**

1.1. Package:

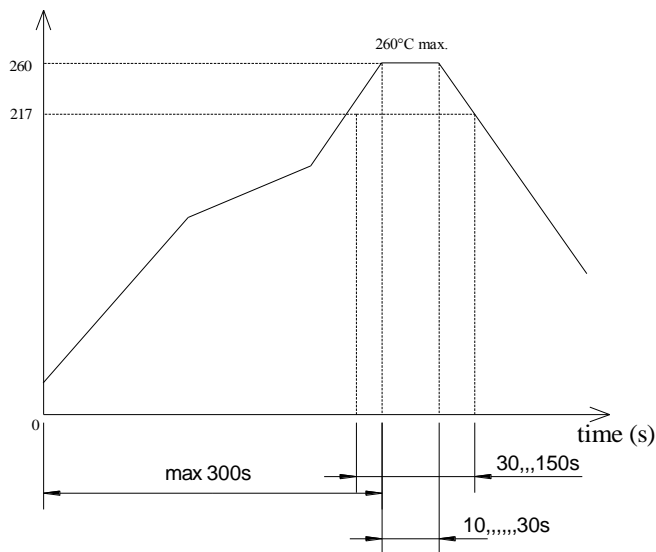


pin1 INPUT  
pin2,4 GND  
pin3 OUTPUT  
pin5,6 Coupling capacitance Cc

GS 2



temperature (°C)



Reflow soldering: three times max.

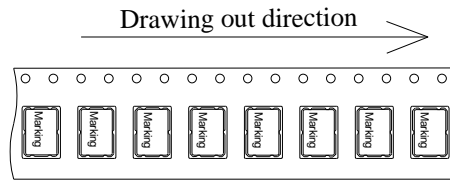
- |                                   |                   |
|-----------------------------------|-------------------|
| 1.2. Type name:                   | MQF 70.05-2000/08 |
| 1.3. Number of poles:             | 4                 |
| 1.4. Operating temperature range: | -20°C to +70°C    |
| 1.5. Storage temperature range:   | -40°C to +85°C    |

## 2. Electric values

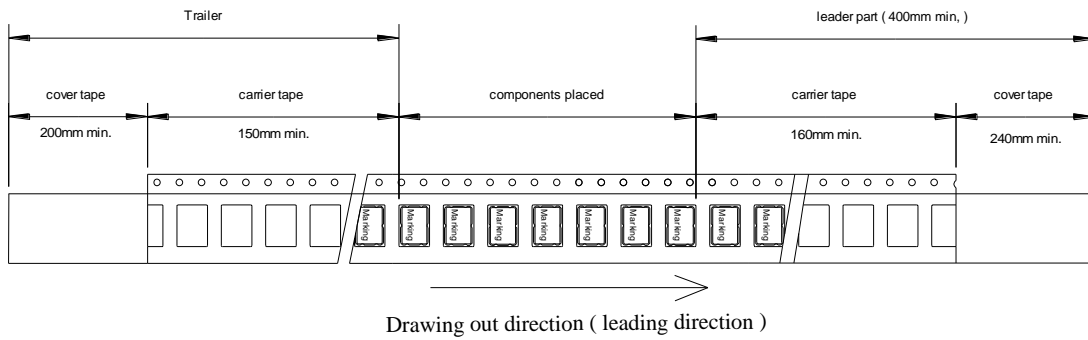
- |   |                             |
|---|-----------------------------|
| 2.1. Nominal centre frequency fo:   | 70.05 MHz                   |
| 2.2. Pass band  |                             |
| 2.2.1. Bandwidth between 3 dB - frequencies:                                | > fo ± 10.0 kHz             |
| 2.2.2. Ripple: ( peak to valley )   | < 1.0 dB                    |
| 2.2.3. Insertion loss:<br>( measured on smallest attenuation in pass band ) | < 4.5 dB                    |
| 2.3. Stop band  |                             |
| 2.3.1. fo ± 25 kHz  | > 20 dB                     |
| 2.3.2. Alternate attenuation at fo ± 910 kHz                                | > 70 dB ( except spurious ) |
| 2.3.3. Spurious responses (within fo ± 1.0 MHz)                             | > 35 dB                     |
| 2.4. Terminating impedance R//C ( input and output ):                       | 800 Ω // 1.0 pF             |
| 2.4.1 Coupling capacitance:   | 5.0 pF                      |
| 2.5. Maximum input power, working / non-damaged                             | -20 / 0 dBm                 |
| 2.6. Out band Intermodulation   |                             |
| 2.6.1. frequency 1/2:   | 70.0 MHz / 70.1 MHz         |
| 2.6.2. Input power level:   | -20 dBm                     |
| 2.6.3. IMD  | > 90 dB                     |
| 2.6.4. frequency 3/4:   | 69.95 MHz / 70.15 MHz       |
| 2.6.5. Input power level:   | -20 dBm                     |
| 2.6.6. IMD  | > 90 dB                     |
| 3. Marking:   | • M7005A<br>yyww            |
| 4. Environment conditions:  | according to Vectron CF001  |
| 5. Filters are Pb-free and 2002 /95 / EC RoHS compliant                     |                             |

6. Packing

maximum 1000 pcs. / reel

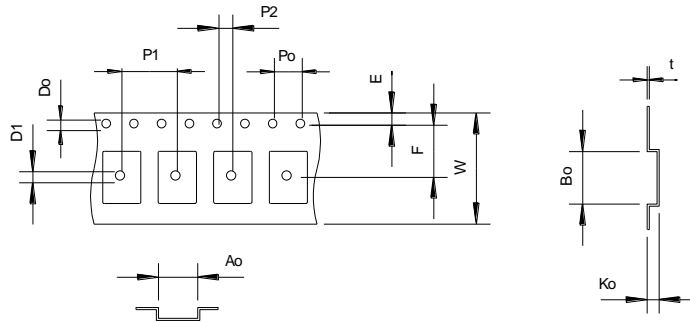


Tape dimension ( mm )



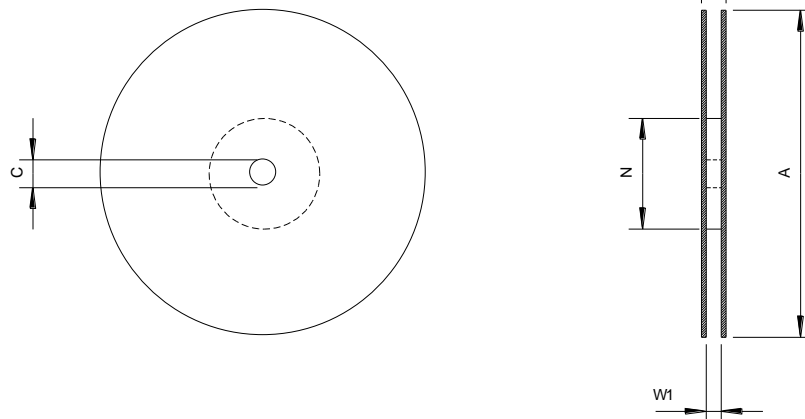
Tape ( all dimensions in mm )

- W: 16.0 ± 0.1
- Po: 4.0 ± 0.1
- P1: 8.0 ± 0.1
- P2: 2.0 ± 0.1
- Do: 1.5 + 0.1 / - 0
- D1: 1.6 + 0.1 / - 0
- E: 1.75 ± 0.1
- F: 7.5 ± 0.1
- Ko: 1.7 ± 0.1
- Ao: 5.6 ± 0.1
- Bo: 7.6 ± 0.1
- t: 0.3 ± 0.05



Reel ( all dimension in mm )

- A:  $\varnothing 178 \pm 2$
- C:  $\varnothing 13 \pm 0.5$
- N:  $\varnothing 60 \pm 1$
- W1: 17.5 ± 1.5
- W2: 21.5 ± 1.5



Edited by: \_\_\_\_\_ date: \_\_\_\_\_ name: \_\_\_\_\_