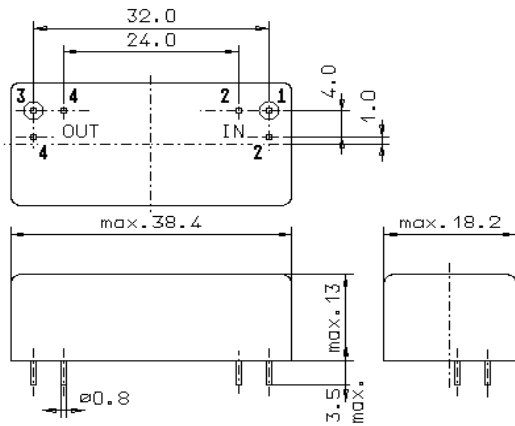


Specification for crystal filter:

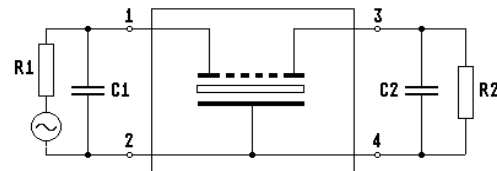
**QF 10.7-0020 / 04V1**

**1. General**

1.1. Package:



GM17



- |                                   |                   |
|-----------------------------------|-------------------|
| 1.2. Type name:                   | QF 10.7-0020/04V1 |
| 1.3. Number of poles:             | 4                 |
| 1.4. Operable temperature range:  | -10°C to +60°C    |
| 1.5. Operating temperature range: | +10°C to +50°C    |
| 1.6. Storage temperature range:   | -25°C to +80°C    |

**2. Electric values**

- |   |  |
|---|--|
| 2.1. Nominal centre frequency fo:   | 10.7 MHz                                     |
| <b>2.2. Pass band</b>   |  |
| 2.2.1. Centre frequency fc (measured at 6-dB frequencies):                  | 10.7 MHz ± 200 Hz                            |
| 2.2.2. Bandwidth between 6 dB - frequencies:                                | ≥ fc ± 85 Hz<br>≤ fc ± 108.5 Hz              |
| 2.2.3. Bandwidth between 20 dB - frequencies:                               | ≤ fc ± 220 Hz                                |
| 2.2.4. Group delay distortion   | ≤ 1 ms ( within 3 dB bandwidth )             |
| 2.2.5. Insertion loss:<br>( measured on smallest attenuation in pass band ) | ≤ 12 dB                                      |
| <b>2.3. Stop band</b>   |  |
| 2.3.1. fc ± 1 kHz.....± 10 kHz  | ≥ 60 dB                                      |
| 2.4. Terminating impedance ( input and output ):                            | 50 Ω // 0 pF                                 |
| <b>2.5. Intermodulation</b>   |  |
| 2.5.1. Intercept point ( IP3 )  | ≥ +25 dBm                                    |
| frequency 1:  | fo +5 kHz                                    |
| frequency 2:  | fo -5 kHz                                    |
| input power level:  | 0 dBm  |
| IM:   | > 50 dB                                      |
| 2.6. Level nonlinearity:  | ≤ 1.5 dB ( at -50 dBm to 0 dBm )             |
| 3. Marking:   | manufacturer, date code<br>QF 10.7-0020/04V1 |
| 4. Environment conditions:  | Corresponding to Vectron standard CF001      |

Edited by: \_\_\_\_\_ date: \_\_\_\_\_ name: \_\_\_\_\_