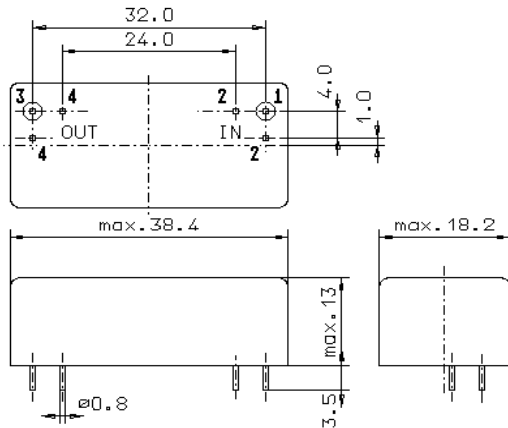


Specification for monolithic crystal filter:

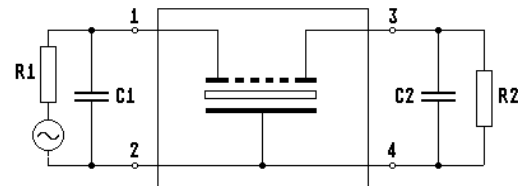
QF 10.7-0050/04

1. General

1.1. Package:



GM17



- | | |
|-----------------------------------|-----------------|
| 1.2. Type name: | QF 10.7-0050/04 |
| 1.3. Number of poles: | 4 |
| 1.4. Operating temperature range: | 0°C to +50°C |
| 1.5. Storage temperature range: | -20°C to +70°C |

2. Electric values

- | | |
|---------------------------------------|----------|
| 2.1. Nominal centre frequency f_0 : | 10.7 MHz |
|---------------------------------------|----------|

2.2. Pass band

- | | |
|---|--|
| 2.2.1. Centre frequency f_c : | 10.7 MHz \pm 75 Hz |
| 2.2.2. Bandwidth between 3 dB - frequencies: | $\geq f_c \pm 225$ Hz
$\leq f_c \pm 275$ Hz |
| 2.2.3. Ripple (at $f_c \pm 100$ Hz): | ≤ 0.6 dB |
| 2.3.4. Phase tracking for pairs at $f_c \pm 200$ Hz: | $\leq 15^\circ$ |
| 2.3.5. Reflection loss (at $f_c \pm 150$ Hz): | ≥ 9.55 dB (i.e. VSWR < 2) |
| 2.2.6. Insertion loss:
(measured on smallest attenuation in pass band) | ≤ 5.0 dB |

2.3. Stop band

- | | |
|--|----------------------------------|
| 2.3.1. $f_0 \pm 2.5$ kHz | ≥ 60 dB |
| 2.3.2. Alternate attenuation: | ≥ 80 dB (except spurious) |
| 2.4. Terminating impedance (input and output): | 50 Ω // 0 pF |

- | | |
|-------------|--|
| 3. Marking: | manufacturer, date code
QF 10.7-0050/04 |
|-------------|--|

- | | |
|----------------------------|---|
| 4. Environment conditions: | Corresponding to Vectron standard CF001 |
|----------------------------|---|

Edited by: _____ date: _____ name: _____