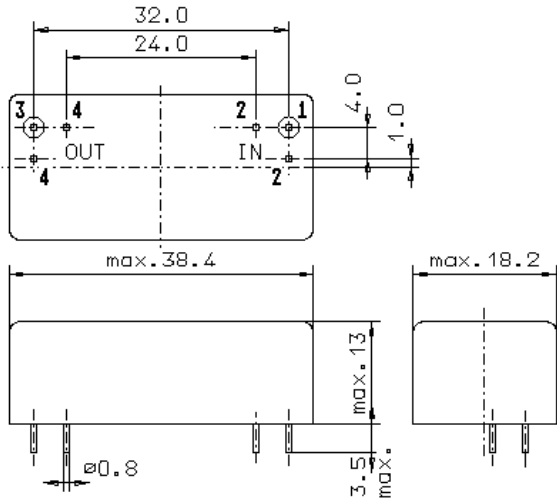


Specification for crystal filter:

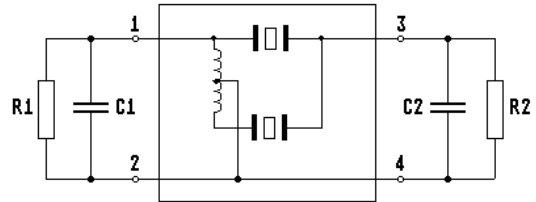
**QF 10.7-10000/09**

**1. General**

**1.1. Package:**



GM17



- 1.2. Type name: QF 10.7-10000/09
- 1.3. Number of poles: 4
- 1.4. Operating temperature range: -40°C to +85°C
- 1.5. Storage temperature range: -45°C to +105°C

**2. Electric values**

- 2.1. Nominal centre frequency  $f_0$ : 10.7 MHz
- 2.2. **Pass band**
  - 2.2.1. Bandwidth between 3 dB frequencies:  $> f_0 \pm 50$  kHz
  - 2.2.2. Ripple:  $< 1.5$  dB at  $f_0 \pm 40$  kHz
  - 2.2.3. Insertion loss:  $< 5.5$  dB  
( measured on smallest attenuation in pass band )
- 2.3. **Stop band**
  - 2.3.1.  $f_0 - 230$  kHz /  $f_0 + 240$  kHz:  $> 50$  dB ( except spurious )
  - 2.3.2.  $f_0 \pm 300$  kHz:  $> 60$  dB ( except spurious )
  - 2.3.3.  $f_0 \pm 500$  kHz:  $> 80$  dB ( except spurious )
  - 2.3.4. Alternate attenuation:  $> 90$  dB
  - 2.3.5. Spurious responses:  $> 40$  dB
- 2.4. Terminating impedance ( input and output ):  $50 \Omega // 0$  pF
- 2.5. Maximum input power level: +16 dBm / +22 dBm ( working / without damage )
- 3. Marking: manufacturer, date code  
QF 10.7-10000/09
- 4. Environment conditions: Corresponding to Vectron MIL standard

Edited by: \_\_\_\_\_ date: \_\_\_\_\_ name: \_\_\_\_\_