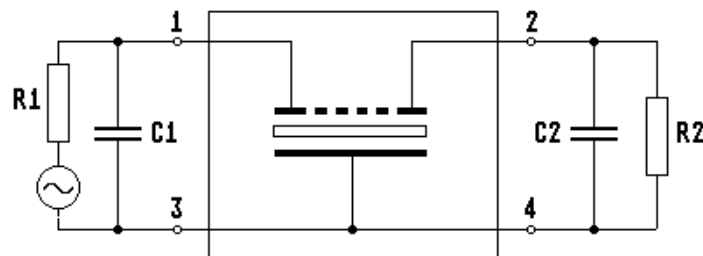
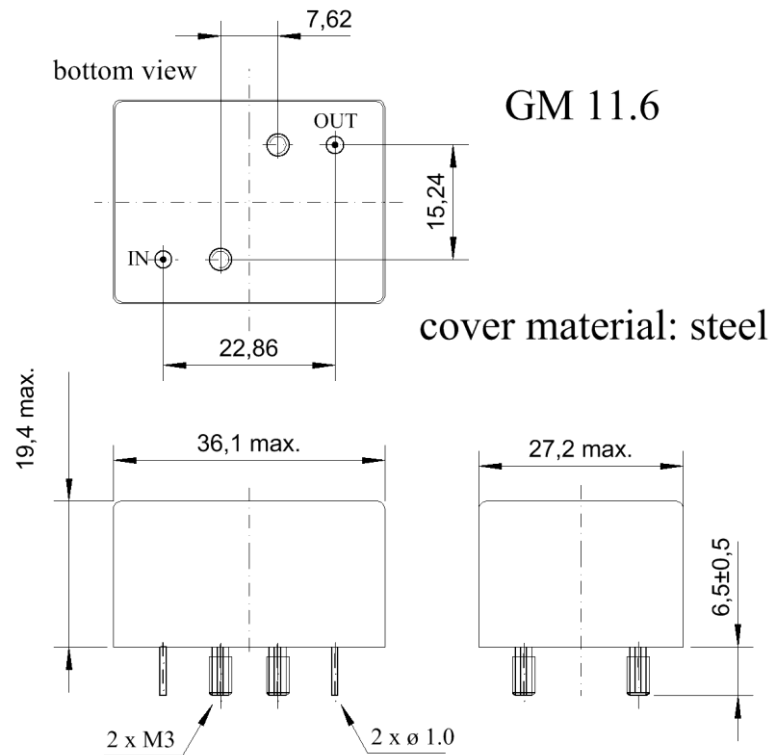


Specification for crystal filter: **QF 2.7648-0600/07**

1. General

1.1. Package:



- | | |
|---|-------------------|
| 1.2. Type name: | QF 2.7648-0600/07 |
| 1.3. Number of poles: | 6 |
| 1.4. Operating temperature range (OTR): | +10°C to +60°C |
| 1.5. Storage temperature range: | -40°C to +90°C |

2. Electric values

- | | |
|---------------------------------------|-------------|
| 2.1. Nominal centre frequency (fo): | 2.76480 MHz |
|---------------------------------------|-------------|

2.2. Pass band

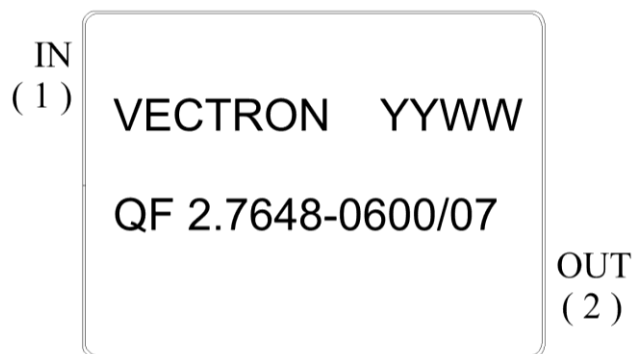
- | | |
|--|----------------|
| 2.2.1. Bandwidth between 3 dB - frequencies: | > fo ± 3.0 kHz |
|--|----------------|

- | | |
|---|---------------------------|
| 2.2.2. Ripple in pass band at fo ± 2.2 kHz: | < 2.0 dB (peak to peak) |
|---|---------------------------|

- 2.2.3. Differential group delay at $f_0 \pm 3.0$ kHz: < 300 μ s
- 2.2.4. Insertion loss: < 5.0 dB
- 2.2.5. Return loss at $f_0 \pm 2.2$ kHz: > 10 dB at +25°C
- 2.3. Stop band
- 2.3.1. $f_0 - 10.0$ kHz / +9.5 kHz: > 60 dB
- 2.3.2. $f_0 - 14.0$ kHz / + 13.5 kHz: > 80 dB
- 2.3.3. $f_0 - 14.0$ kHz.....- 500 kHz: > 80 dB
- 2.3.4. $f_0 + 13.5$ kHz.....+ 500 kHz: > 80 dB (except spurious)
- 2.4. Terminating impedance (input and output): 50 Ω // 0 pF
- 2.5. Maximum input power level
(working / non-damaged): -10dBm / +10dBm
- 2.5.1. Input power level for reference measurements: -10 dBm

top view

3. Marking:



4. Environment conditions: Corresponding to VECTRON standard CF001

Edited by: date: _____ name: _____