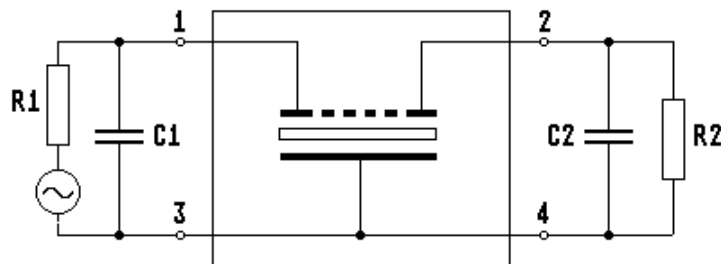
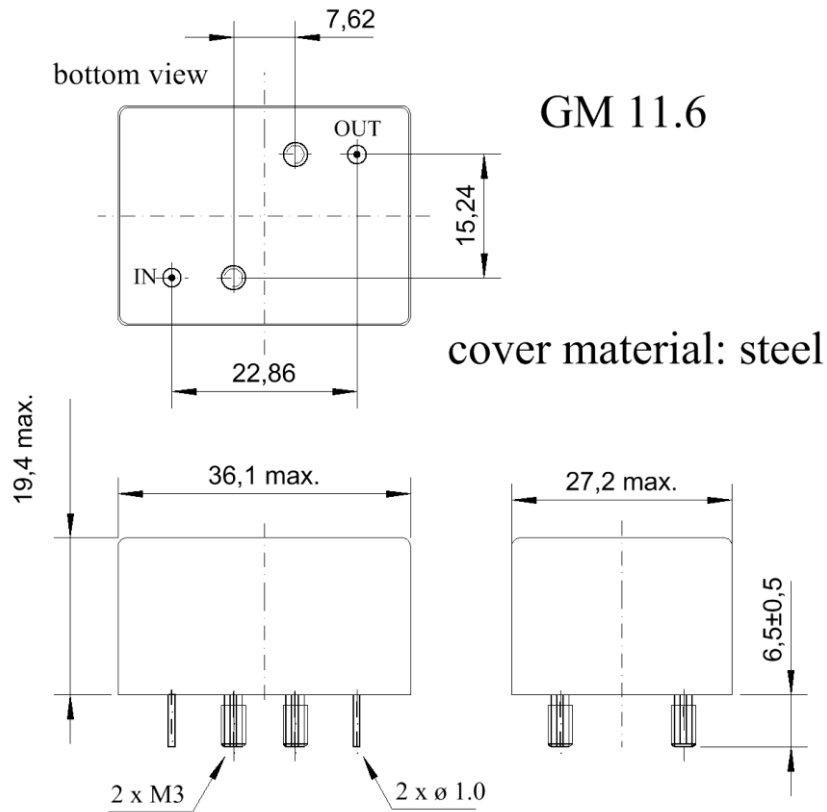


Specification for crystal filter: **QF 2.7648-1600/07**

1. General

1.1. Package:



- |                                   |                   |
|-----------------------------------|-------------------|
| 1.2. Type name:                   | QF 2.7648-1600/07 |
| 1.3. Number of poles:             | 4                 |
| 1.4. Operating temperature range: | +10°C to +60°C    |
| 1.5. Storage temperature range:   | -40°C to +100°C   |

2. Electric values

- |  |                     |
|--|---------------------|
| 2.1. Nominal centre frequency ( $f_0$ ):         | 2.76480 MHz         |
| 2.2. Pass band                                   |                     |
| 2.2.1. Bandwidth between 3 dB - frequencies:     | $> f_0 \pm 8.0$ kHz |
| 2.2.2. Ripple in pass band at $f_0 \pm 6.5$ kHz: | $< 2.0$ dB          |

- 2.2.3. Differential group delay at  $f_0 \pm 8.0$  kHz: < 100  $\mu$ s
- 2.2.4. Insertion loss: < 5.0 dB
- 2.2.5. Return loss at  $f_0 +8.0$  kHz / -7.0 kHz: > 12 dB at +25°C

2.3. Stop band

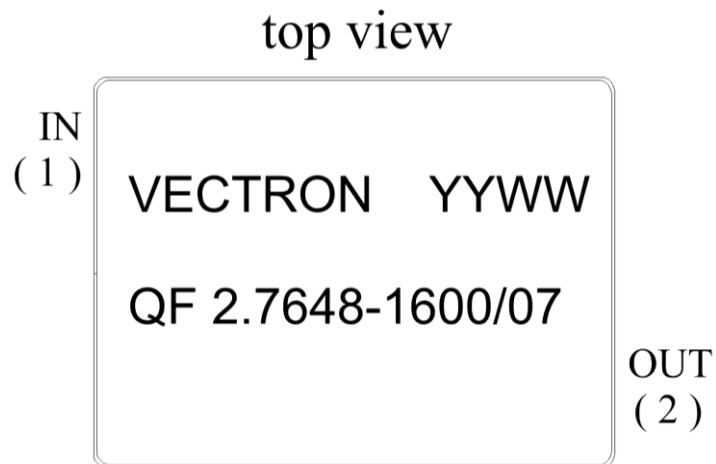
- 2.3.1.  $f_0 \pm 55$  kHz: > 60 dB
- 2.3.2.  $f_0 \pm 100$  kHz: > 80 dB
- 2.3.3.  $f_0 \pm 100$  kHz.....500 kHz: > 80 dB ( except spurious )

2.4. Terminating impedance ( input and output ): 910  $\Omega$  // 3.0 pF

2.5. Maximum input power level  
( working / non-damaged ): -10dBm / +10dBm

2.5.1. Input power level for reference measurements: -10 dBm

3. Marking:



4. Environment conditions: Corresponding to Vectron standard CF001

---

Edited by: \_\_\_\_\_ date: \_\_\_\_\_ name: \_\_\_\_\_