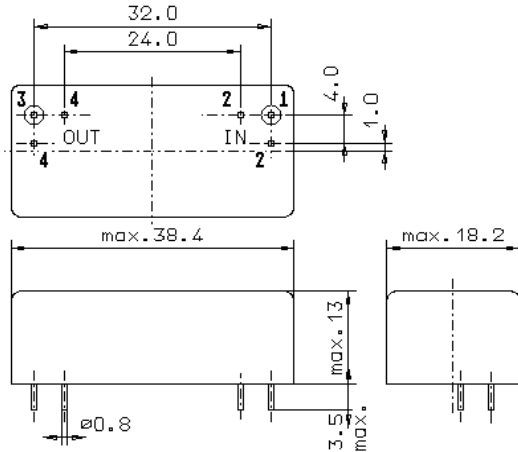


Specification for crystal filter:

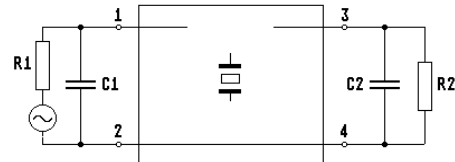
QF 21.4-0020/06

1. General

1.1. Package:



GM17



- | | |
|-----------------------------------|-----------------|
| 1.2. Type name: | QF 21.4-0020/06 |
| 1.3. Number of poles: | 6 |
| 1.4. Operating temperature range: | -20°C to +70°C |
| 1.5. Storage temperature range: | -45°C to +85°C |

2. Electric values

- | | |
|---|--|
| 2.1. Nominal centre frequency fo: | 21.4 MHz |
| 2.2. Pass band | |
| 2.2.1. Centre frequency fc: | 21.4 MHz ± 250 Hz |
| 2.2.2. Bandwidth between 6 dB - frequencies: | ≥ fc ± 100 Hz
≤ fc ± 250 Hz |
| 2.2.3. Ripple: | Gaussian |
| 2.2.4. Group delay distortion: | ≤ 300 μs at fc ± 100 Hz |
| 2.2.5. Insertion loss:
(measured on smallest attenuation in pass band) | ≤ 24 dB |
| 2.3. Stop band | |
| 2.3.1. fc ± 0.5 kHz | ≥ 40 dB |
| 2.3.2. Alternate attenuation: | ≥ 60 dB |
| 2.3.3. Spurious responses: | ≥ 60 dB |
| 2.4. Terminating impedance (input and output): | 50 Ω // 0 pF |
| 3. Marking: | manufacturer, date code
QF 21.4-0020/06 |
| 4. Environment conditions: | Corresponding to Vectron standard CF001 |

Edited by: _____ date: _____ name: _____