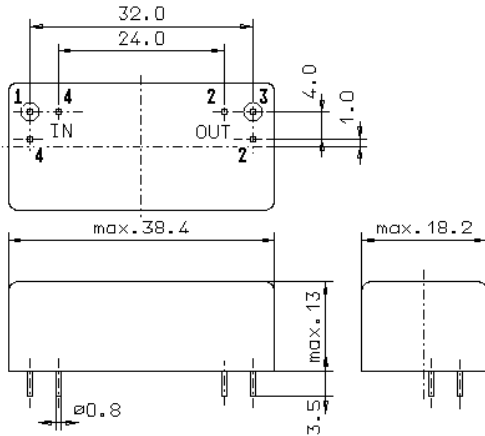


Specification for crystal filter:

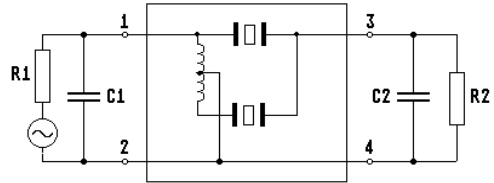
**QF 21.4-10000/08**

**1. General**

**1.1. Package:**



GM17.1



- 1.2. Type name: QF 21.4-10000/08
- 1.3. Number of poles: 6
- 1.4. Operating temperature range: -30°C to +70°C
- 1.5. Storage temperature range: -45°C to +85°C

**2. Electric values**

- 2.1. Nominal centre frequency fo: 21.4 MHz

**2.2. Pass band**

- 2.2.1. Bandwidth between 3 dB - frequencies:
  - > fo ± 45 kHz
  - < fo ± 55 kHz
- 2.2.2. Ripple: < 1.5 dB at fo ± 30 kHz
- 2.2.3. Insertion loss: < 4.0 dB  
( measured on smallest attenuation in pass band )

**2.3. Stop band**

- 2.3.1. fo ± 155 kHz > 60 dB
- 2.3.2. Alternate attenuation: > 60 dB ( except spurious )
- 2.3.3. Spurious responses at fo+125kHz to fo+1.0 MHz > 35 dB

- 2.4. Terminating impedance ( input and output ): 50 Ω // 0 pF

- 3. Marking: manufacturer, date code  
QF 21.4-10000/08

- 4. Environment conditions: Corresponding to Vectron standard CF001