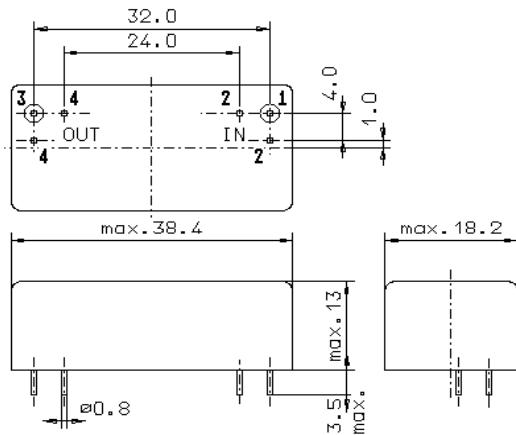


Specification for crystal filter:

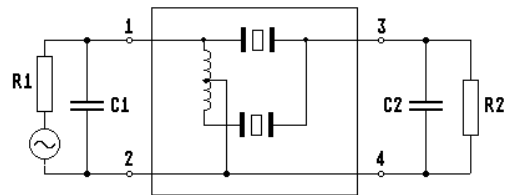
QF 21.4-12000/06V4

1. General

1.1. Package:



GM17



- | | |
|-----------------------------------|--------------------|
| 1.2. Type name: | QF 21.4-12000/06V4 |
| 1.3. Number of poles: | 6 |
| 1.4. Operating temperature range: | -20°C to +70°C |
| 1.5. Storage temperature range: | -35°C to +85°C |

2. Electric values

- | | |
|---|--|
| 2.1. Nominal centre frequency fo: | 21.4 MHz |
| 2.2. Pass band | |
| 2.2.1. Bandwidth between 3 dB - frequencies: | $\geq f_o \pm 60$ kHz |
| 2.2.2. Ripple: | ≤ 1.5 dB at $f_o \pm 45$ kHz |
| 2.2.3. Insertion loss: | ≤ 9.0 dB |
| (measured on smallest attenuation in pass band) | |
| 2.3. Stop band | |
| 2.3.1. $f_o - 300$ kHz | ≥ 60 dB |
| 2.3.2. $f_o + 300$ kHz | ≥ 40 dB |
| 2.3.3. $f_o \pm 400$ kHz | ≥ 50 dB |
| 2.3.4. Alternate attenuation: | ≥ 60 dB |
| 2.3.5. Spurious responses: | ≥ 50 dB |
| 2.4. Terminating impedance (input and output): | $50 \Omega // 0$ pF |
| 2.5. Intermodulation (IP3 > 31 dBm) | |
| frequency 1: | 21.60 MHz / 21.80 MHz |
| frequency 2: | 21.20 MHz / 21.00 MHz |
| input power: | 0 dBm |
| IM: | > 62 dB (down from both of the 0 dBm input test tones) |
| 3. Marking: | manufacturer, date code
QF 21.4-12000/06V4 |
| 4. Environment conditions: | Corresponding to Vectron standard CF001 |

Edited by: _____ date: _____ name: _____