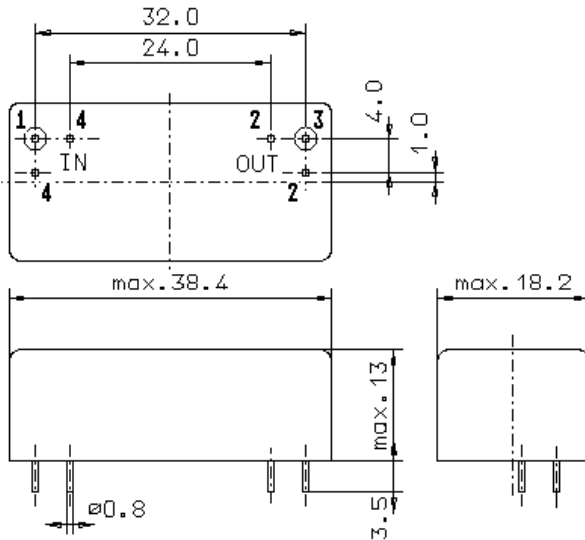


Specification for crystal filter:

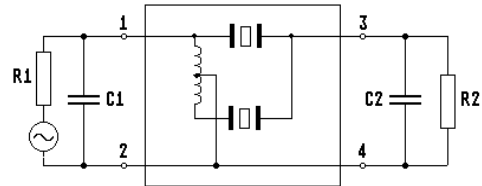
QF 21.4-25000/04

1. General

1.1. Package:



GM17.1



- | | |
|-----------------------------------|------------------|
| 1.2. Type name: | QF 21.4-25000/04 |
| 1.3. Number of poles: | 6 |
| 1.4. Operating temperature range: | -30°C to +70°C |
| 1.5. Storage temperature range: | -40°C to +90°C |

2. Electric values

- | | |
|---|---------------------------------|
| 2.1. Nominal centre frequency f_0 : | 21.4 MHz |
| 2.2. Pass band | |
| 2.2.1. Bandwidth between 3 dB - frequencies: | $> f_0 \pm 125$ kHz |
| 2.2.2. Ripple: | < 2.0 dB at $f_0 \pm 100$ kHz |
| 2.2.3. Insertion loss:
(measured on smallest attenuation in pass band) | < 8.5 dB |
| 2.3. Stop band | |
| 2.3.1. $f_0 \pm 600$ kHz | > 60 dB (except spurious) |
| 2.3.2. Alternate attenuation | > 80 dB (except spurious) |
| 2.4. Terminating impedance (input and output): | $50 \Omega // 0$ pF |

3. Marking: manufacturer, date code
QF 21.4-25000/04

4. Environment conditions: Corresponding to Vectron standard CF001

Edited by: _____ date: _____ name: _____