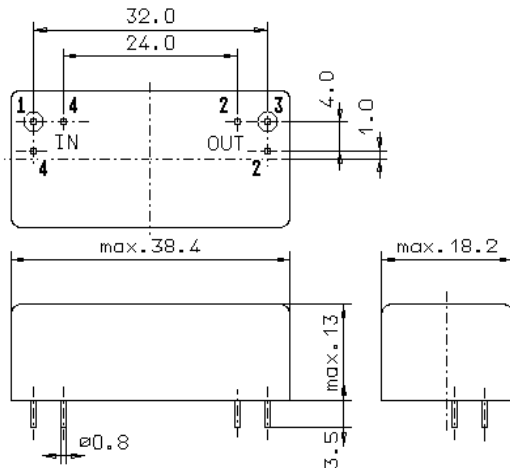


Specification for crystal filter:

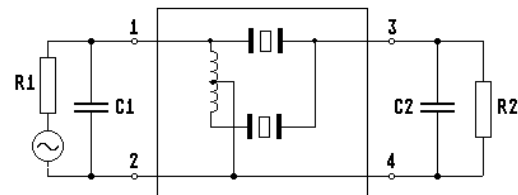
QF 25.34-20000/06

1. General

1.1. Package:



GM17.1



- | | |
|-----------------------------------|-------------------|
| 1.2. Type name: | QF 25.34-20000/06 |
| 1.3. Number of poles: | 6 |
| 1.4. Operating temperature range: | -30°C to +70°C |
| 1.5. Storage temperature range: | -45°C to +85°C |

2. Electric values

- | | |
|---|--|
| 2.1. Nominal centre frequency fo: | 25.34 MHz |
| 2.2. Pass band | |
| 2.2.1. Centre frequency fc: | 25.34 MHz ± 6.0 kHz |
| 2.2.2. Bandwidth between 3 dB - frequencies: | > fo ± 100 kHz |
| 2.2.3. Ripple: | < 1.5 dB at fo ± 80 kHz |
| 2.2.4. Insertion loss:
(measured on smallest attenuation in pass band) | < 8.0 dB |
| 2.3. Stop band | |
| 2.3.1. fo ± 400 kHz | ≥ 60 dB (except spurious) |
| 2.3.2. Alternate attenuation | > 80 dB (except spurious) |
| 2.4. Terminating impedance (input and output): | 50 Ω // 0 pF |
| 2.5. Maximum input power level: | +10 dBm / +15 dBm (working / non-damaged) |
| 3. Marking: | manufacturer, date code
QF 25.34-20000/06 |
| 4. Environment conditions: | Corresponding to Vectron standard CF001 |

Edited by: _____ date: _____ name: _____