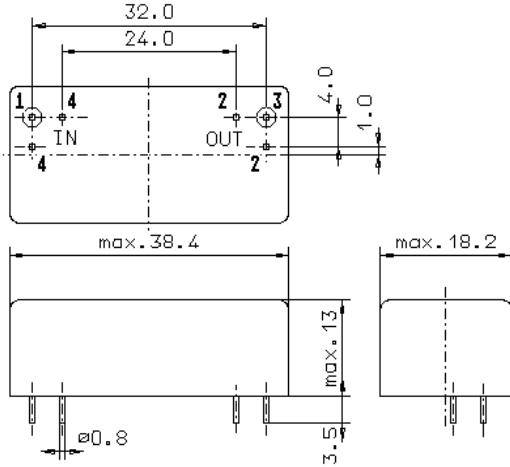


Specification for crystal filter:

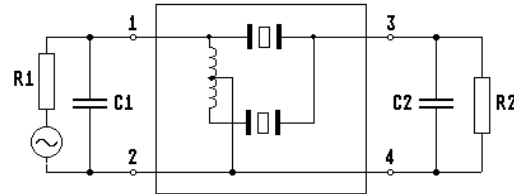
**QF 26.0-20000/06**

**1. General**

1.1. Package:



GM17.1



- 1.2. Type name: QF 26.0-20000/06
- 1.3. Number of poles: 6
- 1.4. Operating temperature range: -30°C to +70°C
- 1.5. Storage temperature range: -45°C to +85°C

**2. Electric values**

- 2.1. Nominal centre frequency fo: 26.0 MHz
- 2.2. **Pass band**
  - 2.2.1. Centre frequency fc: 26.0 MHz ± 6.0 kHz
  - 2.2.2. Bandwidth between 3 dB - frequencies: > fo ± 100 kHz
  - 2.2.3. Ripple: < 1.5 dB at fo ± 80 kHz
  - 2.2.4. Insertion loss: < 8.0 dB  
( measured on smallest attenuation in pass band )
- 2.3. **Stop band**
  - 2.3.1. fo ± 400 kHz: ≥ 60 dB (except spurious )
  - 2.3.2. Alternate attenuation: > 80 dB (except spurious )
- 2.4. Terminating impedance ( input and output ): 50 Ω // 0 pF
- 2.5. Maximum input power level: +10 dBm / +15 dBm ( working / non-damaged )
- 3. Marking: manufacturer, date code  
QF 26.0-20000/06
- 4. Environment conditions: Corresponding to Vectron standard CF001

Edited by: \_\_\_\_\_ date: \_\_\_\_\_ name: \_\_\_\_\_