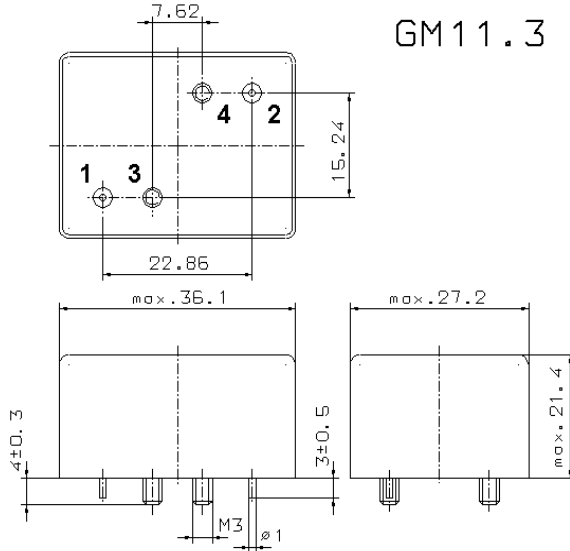


Specification for crystal filter:

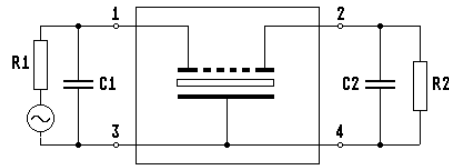
QF 4.9985 - 0010/08

1. General

1.1. Package:



GM11.3



Note: Pin 2 - Output Pin 3 - Ground

- 1.2. Type name: QF 4.9985-0010/08
- 1.3. Number of poles: 8
- 1.4. Operating temperature range: 0°C to +75°C
- 1.5. Storage temperature range: -45°C to +85°C

2. Electric values

- 2.1. Nominal centre frequency f_0 : 4.9985 MHz
- 2.2. **Pass band**
 - 2.2.1. Bandwidth between 3 dB frequencies: $> f_0 \pm 0.05$ kHz
 - 2.2.2. Ripple at $f_0 \pm 0.05$ kHz: Gaussian
 - 2.2.3. Insertion loss: < 9.5 dB
(measured on smallest attenuation in pass band)
- 2.3. **Stop band**
 - 2.3.1. $f_0 \pm 0.35$ kHz: > 60 dB
 - 2.3.2. Alternate attenuation: > 80 dB
- 2.4. Terminating impedance (input and output): $50 \Omega // 0$ pF
- 2.5. Out band Intermodulation
 - input power level: -10 dBm
 - frequencies: $f_0 \pm 400$ Hz / $f_0 \pm 800$ Hz
 - Intermodulation: > 80 dB
- 3. Marking: manufacturer, date code
QF 4.9985-0010/08
- 4. Environment conditions: Corresponding to Vectron standard CF001