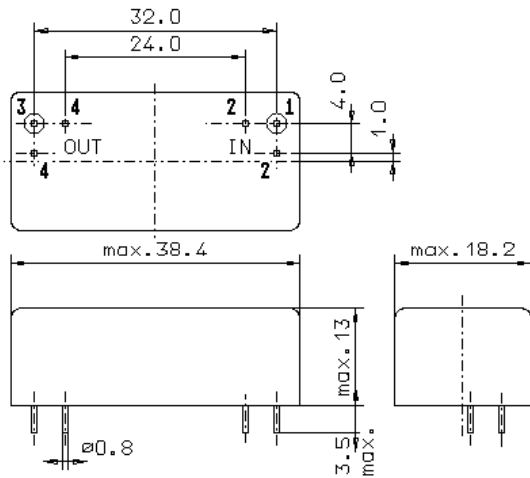


Specification for crystal filter:

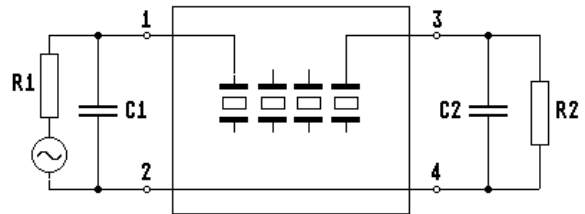
QF 45.0-0300/06

1. General

1.1. Package:



GM17



- 1.2. Type name: QF 45.0-0300/06
- 1.3. Number of poles: 5
- 1.4. Operating temperature range: -20°C to +80°C
- 1.5. Storage temperature range: -45°C to +85°C

2. Electric values

- 2.1. Nominal centre frequency f_0 : 45.0 MHz

2.2. Pass band

- 2.2.1. Centre frequency f_c at +25°C: 45.0 MHz \pm 400 Hz
- 2.2.2. Bandwidth between 3 dB - frequencies: $> f_c \pm 1.5$ kHz
- 2.2.3. Ripple: < 2.0 dB peak to peak
- 2.2.4. Insertion loss: ≤ 9.0 dB
(measured on smallest attenuation in pass band)

2.3. Stop band

- 2.3.1. $f_c + 10$ kHz, $f_c - 11$ kHz: > 60 dB
- 2.3.2. $f_c + 15$ kHz, $f_c - 16$ kHz: > 80 dB
- 2.3.3. Spurious responses at $f_c + 15$ kHz.....+500 kHz: ≥ 60 dB

- 2.4. Terminating impedance (input and output): $50 \Omega // 0$ pF
- 2.5. Input power level (working / non-damaged): < 0 dBm / +15 dBm

- 3. Marking: manufacturer, date code
QF 45.0-0300/06

- 4. Environment conditions: Corresponding to Vectron standard CF001

Edited by: _____ date: _____ name: _____