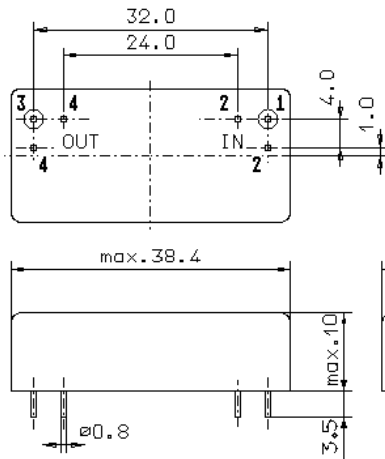


Specification for crystal filter:

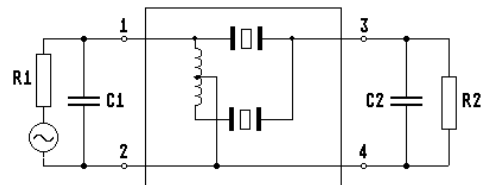
**QF 70.0-10000/12**

**1. General**

1.1. Package:



GM17.3



- |                                   |                  |
|-----------------------------------|------------------|
| 1.2. Type name:                   | QF 70.0-10000/12 |
| 1.3. Number of poles:             | 4                |
| 1.4. Operating temperature range: | -40°C to +70°C   |
| 1.5. Storage temperature range:   | -45°C to +85°C   |

**2. Electric values**

- |   |                                    |
|---|------------------------------------|
| 2.1. Nominal centre frequency $f_0$ :                                       | 70.0 MHz                           |
| 2.2. <b>Pass band</b>   |                                    |
| 2.2.1. Bandwidth between 3 dB - frequencies:                                | $> f_0 \pm 50$ kHz                 |
| 2.2.2. Ripple:  | $< 1.0$ dB ( peak to peak )        |
| 2.2.3. Insertion loss:<br>( measured on smallest attenuation in pass band ) | $< 8$ dB                           |
| 2.3. <b>Stop band</b>   |                                    |
| 2.3.1. $f_0 \pm 200$ kHz  | $> 50$ dB                          |
| 2.3.2. Alternate attenuation:   | $> 70$ dB ( except spurious )      |
| 2.3.3. Spurious responses:  | $> 50$ dB                          |
| 2.4. Terminating impedance ( input and output ):                            | $50 \Omega // 0$ pF                |
| 2.5. Maximum input power level:   | +5 / +15 ( working / non-damaged ) |

- |                            |   |
|----------------------------|---|
| 3. Marking:                | manufacturer, date code<br>QF 70.0-10000/12 |
| 4. Environment conditions: | Corresponding to Vectron standard CF001     |

Edited by: \_\_\_\_\_ date: \_\_\_\_\_ name: \_\_\_\_\_