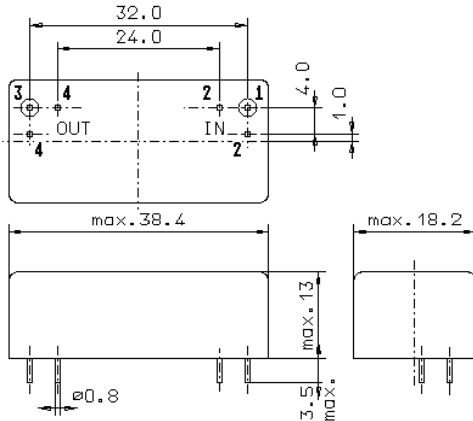


Specification for crystal filter

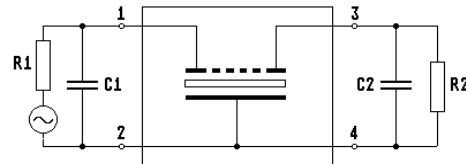
**QF 70.0-20000/05**

**1. General**

1.1. Package:



GM17



- |   |                  |
|---|------------------|
| 1.2. Type name:                           | QF 70.0-20000/05 |
| 1.3. Number of poles:                     | 4                |
| 1.4. Operating temperature range ( OTR ): | -20°C to +80°C   |
| 1.5. Storage temperature range:           | -45°C to +85°C   |

**2. Electric values**

- |   |                         |
|---|-------------------------|
| 2.1. Nominal centre frequency fo:   | 70.0 MHz                |
| 2.2. <b>Pass band</b>   |                         |
| 2.2.1. Bandwidth between 6 dB - frequencies:                                | > fo ± 95 kHz           |
| 2.2.2. Ripple:  | Gaussian                |
| 2.2.3. Differential group delay in OTR:                                     | < 1.0 µs at fo ± 75 kHz |
| 2.2.4. Insertion loss:<br>( measured on smallest attenuation in pass band ) | < 8 dB                  |

**2.3. Stop band**

- |                            |   |
|----------------------------|---|
| 2.3.1. fo ± 500 kHz        | > 40 dB                                 |
| 2.3.2. fo ± 800 kHz        | > 60 dB                                 |
| 2.3.3. fo ± 2000 kHz       | > 75 dB                                 |
| 2.3.4. Spurious responses: | permitted at frequencies > fo + 800 kHz |

- |  |              |
|--|--------------|
| 2.4. Terminating impedance ( input and output ): | 50 Ω // 0 pF |
|--|--------------|

- |   |         |
|---|---------|
| 2.5. Max. input power level (operate ):     | -5 dBm  |
| 2.6. Max. input power level without damage: | +10 dBm |

- |             |   |
|-------------|---|
| 3. Marking: | manufacturer, date code<br>QF 70.0-20000/05 |
|-------------|---|

- |                            |   |
|----------------------------|---|
| 4. Environment conditions: | Corresponding to Vectron standard CF001 |
|----------------------------|---|

Edited by: \_\_\_\_\_ date: \_\_\_\_\_ name: \_\_\_\_\_