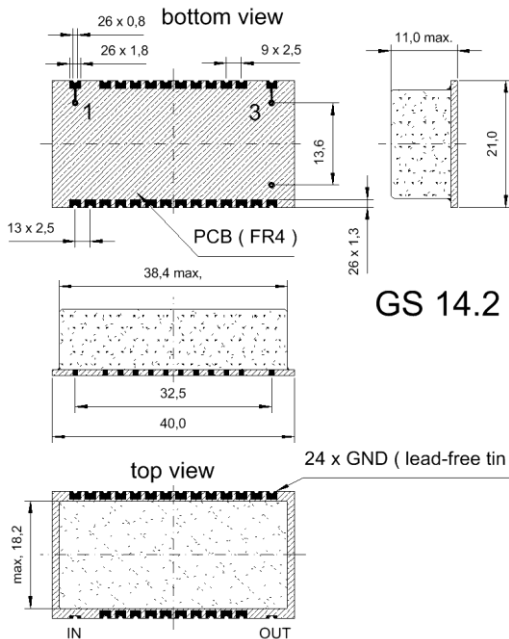


Specification for crystal filter:

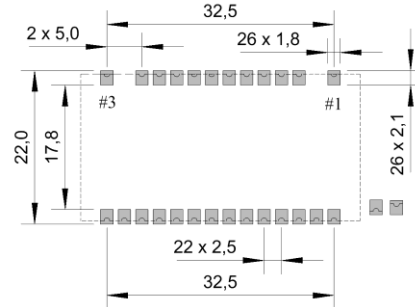
**QF 70.0 - 20000/09**

**1. General**

**1.1. Package:**

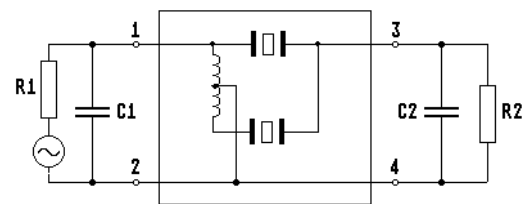


recommended footprint for package GS 14.xx  
top view



pin connection:

- #1: Input
- #3: Output
- #2, 4: GND



**Note: Package GS14.2 is not suitable for reflow soldering**

- 1.2. Type name: QF 70.0-20000/09
- 1.3. Number of poles: 8
- 1.4. Operating temperature range: -40°C to +85°C
- 1.5. Storage temperature range: -40°C to +85°C

**2. Electric values**

- 2.1. Nominal centre frequency fo: 70.0 MHz
- 2.2. **Pass band**
  - 2.2.1. Bandwidth between 3 dB - frequencies: > fo ± 100 kHz
  - 2.2.2. Ripple in pass band: < 2.0 dB ( peak to peak )
  - 2.2.3. Insertion loss: < 4.5 dB  
( measured on smallest attenuation in pass band )
- 2.3. **Stop band**
  - 2.3.1. fo ± 220 kHz > 60 dB ( except spurious )
  - 2.3.2. Guaranteed attenuation ( fo ± 5.....±70 MHz ): > 70 dB
- 2.4. Terminating impedance ( input and output ): 50 Ω // 0 pF
- 2.5. Maximum input power level: 0 / +15 ( working / non-damaged )
- 3. Marking: manufacturer, date code  
QF 70.0-20000/09
- 4. Environment conditions: Corresponding to Vectron standard CF001