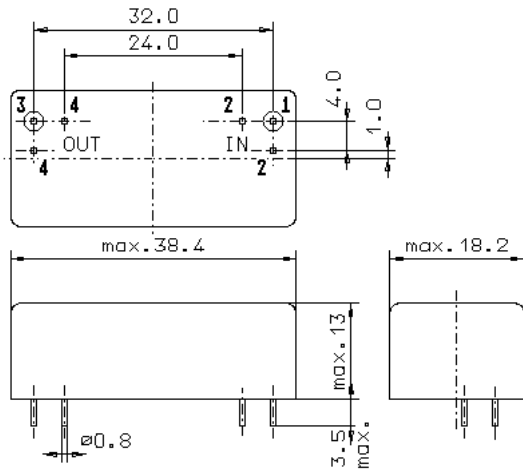


Specification for crystal filter:

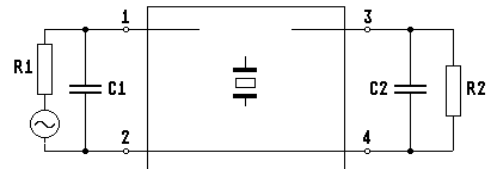
**QF 9.5625 - 3000/06**

## 1. General

### 1.1. Package:



GM17



- |                                       |                   |
|---------------------------------------|-------------------|
| 1.2. Type name:                       | QF 9.5625-3000/06 |
| 1.3. Number of poles:                 | 4                 |
| 1.4. Operating temperature range OTR: | -30°C to +60°C    |
| 1.5. Storage temperature range:       | -40°C to +85°C    |

## 2. Electric values

- |  |  |
|--|--|
| 2.1. Nominal centre frequency $f_0$ :  | 9.56250 MHz                                  |
| 2.1.1. Stability of centre frequency in OTR:   | < $\pm 300$ Hz ( referred to +25°C )         |
| 2.1.2. Centre frequency $f_c$ ( measured at +25°C ):   | $f_0 \pm 500$ Hz                             |
| <b>2.2. Pass band</b>  |  |
| 2.2.1. Bandwidth between 3 dB - frequencies:   | > $f_0 \pm 15$ kHz                           |
| 2.2.2. Ripple in pass band within $f_0 \pm 10$ kHz:  | < 1.0 dB ( peak to peak )                    |
| 2.2.3. Insertion loss:<br>( measured on smallest attenuation in pass band )                        | < 5.0 dB                                     |
| 2.2.4. Phase linearity within $f_0 \pm 8$ kHz:<br>( measured as deviation from a regression line ) | < $\pm 3.0$ deg.                             |
| <b>2.3. Stop band</b>  |  |
| 2.3.1. $f_0 \pm 40$ kHz  | > 30 dB                                      |
| 2.3.2. $f_0 \pm 65$ kHz  | > 50 dB                                      |
| 2.3.3. $f_0 \pm 120$ kHz   | > 70 dB ( except spurious )                  |
| 2.3.4. Guaranteed attenuation:<br>( DC < $f$ < 7.5 MHz and 10.5 MHz < $f$ < 25 MHz )               | > 90 dB ( except spurious )                  |
| 2.4. Terminating impedance ( input and output ):   | 50 $\Omega$ // 0 pF                          |
| 2.5. Maximum input power level:  | +15 dBm / +25 dBm ( working / non-damaged )  |
| 3. Marking:  | manufacturer, date code<br>QF 9.5625-3000/06 |
| 4. Environment conditions:   | Corresponding to Vectron MIL standard        |

Edited by: \_\_\_\_\_ date: \_\_\_\_\_ name: \_\_\_\_\_