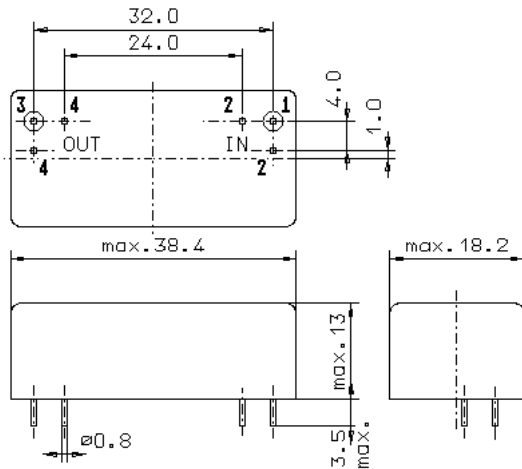


Specification for crystal filter:

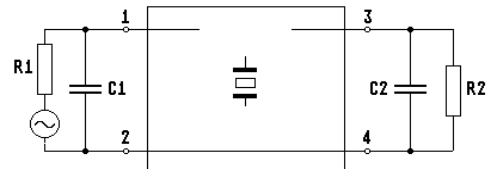
QF 9.6022 - 6000/06

1. General

1.1. Package:



GM17



- | | |
|---------------------------------------|-------------------|
| 1.2. Type name: | QF 9.6022-6000/06 |
| 1.3. Number of poles: | 4 |
| 1.4. Operating temperature range OTR: | -30°C to +60°C |
| 1.5. Storage temperature range: | -40°C to +85°C |

2. Electric values

- | | |
|---|--|
| 2.1. Nominal centre frequency f_0 : | 9.602250 MHz |
| 2.1.1. Stability of centre frequency in OTR: | < ± 300 Hz (referred to +25°C) |
| 2.1.2. Centre frequency f_c measured at +25°C: | $f_0 \pm 500$ Hz |
| 2.2. Pass band | |
| 2.2.1. Bandwidth between 3 dB - frequencies: | > $f_0 \pm 27$ kHz
< $f_0 \pm 33$ kHz |
| 2.2.2. Ripple in pass band within $f_0 \pm 20$ kHz: | < 1.0 dB (peak to peak) |
| 2.2.3. Insertion loss: | < 5.0 dB |
| (measured on smallest attenuation in pass band) | |
| 2.2.4. Phase linearity within $f_0 \pm 14$ kHz: | < ± 3.0 deg. |
| (measured as deviation from a regression line) | |
| 2.3. Stop band | |
| 2.3.1. $f_0 \pm 120$ kHz | > 50 dB |
| 2.3.2. $f_0 \pm 200$ kHz | > 70 dB (except spurious) |
| 2.3.3. Guaranteed attenuation : | > 90 dB (except spurious) |
| (DC < f < 7.5 MHz and 10.5 MHz < f < 25 MHz) | |
| 2.4. Terminating impedance (input and output): | 50 Ω // 0 pF |
| 2.5. Maximum input power level: | +15 dBm / +25 dBm (working / non-damaged) |
| 3. Marking: | manufacturer, date code
QF 9.6022-6000/06 |
| 4. Environment conditions: | Corresponding to Vectron MIL standard |

Edited by: _____ date: _____ name: _____